



# NASPA Bulletin

The monthly news bulletin of the North American SCRABBLE® Players Association

## July 2012: Vol. 4, No. 2

### The 2012 Dallas Open: Winter in Spring

by Chris Cree

2012 marked the final year for the Dallas Open. This was the seventh such event: DO7.

The event was born following discussions of divisions and my belief that the players of today have no idea how good they are. Anybody can beat anyone at any time. For many years with our old rating system, one was basically stuck within a division. This was in contrast to the way SCRABBLE tournaments were when I first started in 1980. All tournaments were single-division. After the formation of divisions, upward movement was extremely difficult to maintain and lower-division players never had the opportunity to compare themselves to and compete with the best. So, to prove the point, the open tournament was resurrected and the first Dallas Open took place in 2006.

In the very first game of the first Dallas Open, Phyllis Owen (Plano, TX), rated no more than 800, bested one of the best players to ever play the game, Robin Pollock Daniel (Toronto, ON). No matter what happens in the rest of her career, Phyllis has that personal victory that no one can ever take away.

Each year we honor the two biggest upsets with a prize. This year was no different. The two biggest upsets were 889-rated Carolyn Atchison (Avery Island, LA), who beat 1773-rated David Whitley (Monrovia, CA) 399-386 in the very first round; and 769-rated Joy Nees (Dallas, TX), who beat 1519-rated Wes Eddings (College Station, TX) in Round 10, 441-290.

The competition in this event was top-notch. Kate Fukawa-Connelly (Kittery, ME) got off to a tremendous start, while defending champion Dave Wiegand (Portland, OR) struggled early on. Darrell Day (Richardson, TX) returned to form. By Round 15, 16 people were still in the running for the top prize. Winter (Houston, TX) won five games in a row against opponents rated an average of 1876 to vault from tenth place to second place and a showdown with Darrell for the title and the \$3,000 top prize.

Winter got off to a big early lead and won going away. He won his final six games against the field's best by a cumulative total of 696 points, more than 100 per game! The chances of winning six in a row against equal competition is 1 in 64. By that many points?

*THE FUTURE OF DO continued on p. 2*



*Board 1 at the Dallas Open: (L-R) annotator Dee Segrest (Highland Village, TX), event leader Kate Fukawa-Connelly (Kittery, ME) in the seat she kept throughout the second day, her Round 15 opponent Patricia Barrett (Houston, TX) and annotator Kathleen Watson (Bedford, TX).*

### What Happened in Vegas

by John Chew

It was one of the most highly anticipated tournaments in recent years. Sam Kantimathi (Sacramento, CA), renowned for his contributions to every other aspect of the competitive SCRABBLE tournament circuit (inveterate globetrotting player, developer and distributor of game equipment, and active committee volunteer), was finally inviting us all to come play at his debut as a tournament impresario. Not one to do anything by half measures, Sam offered two levels of early registration discounts to get the buzz going early, beginning way back in last August, and two early birds and a main event in each of the TWL and Collins lexica, all directed by Mark Milan (Laguna Niguel, CA).

The event was held at the Palms Casino Resort, in its well-appointed convention space, on February 16-20. The hundred-player attendance was phenomenal for a first-time event, especially one taking place on the same weekend in the crowded NASPA tournament calendar as Ryan Fischer's (Charlotte, NC) East Coast Championship.

I myself was able to play in the Collins Main Event, where I had the pleasure of playing some familiar foreign players for the first time, after directing them at many an overseas event. Sam

*PALMS SUNDAY continued on p. 2*

### 2012 NSC Update

by the Championship Committee

When we first began writing this article, it was April, and Chris Cree had just had a chance to visit the site of this year's National SCRABBLE Championship (NSC), the Royal Pacific Resort in Orlando, FL. Our NSC takes place of course on August 11-15, but on that occasion it was the turn of our partner organization, the National SCRABBLE Association, to put on their National School SCRABBLE Championship (NSSC), about which more in a future issue. We overheard players there talking about August: for many this was their third or fourth event at the venue, which speaks to the appeal it holds for repeat visitors. A large part of that appeal has to do with the front-of-the-line ride access and early park entry hotel guests get to the two adjoining Universal theme parks.

At this point now, in late July, we have almost 350 paid entrants, from 46 states and provinces, with a steady stream coming in even at the very end of the registration period. It's looking very likely that we will exceed last year's 327 players by a healthy margin. In addition to the usual complement of OWL lexicon divisions, this year's event boasts the first-ever Collins Division at an NSC.

*NSC UPDATE continued on p. 4*



DO7 Director Bryan Pepper (Bedford, TX) keeps a watchful eye on the room as Kate Fukawa-Connelly awaits her next victim

## The Future of DO

from *THE 2012 DALLAS OPEN*, p. 1

Certainly the odds were longer. But, Winter has certainly played all sorts of sets of six games against all sorts of levels of players and obviously has the talent to beat anyone.

This past year I decided that this year would be the final Dallas Open that I would produce. My wife and I had our second child in May. With my other responsibilities and duties, something had to be let go.

In February at the Texas State Championship in Salado, Texas, we had a meeting of Texas directors who decided they would carry on the Texas Open in March. I am pleased to say that the Houston directors have already applied for and received sanctioning to host the Texas Open next year in Houston.

### Final Results

1st: Winter. 2nd: Darrell Day. 3rd (Uncle Wiggly place): Dave Wiegand. Class A: Roy Kamen (Covina, CA). Class B: John Redding (Dallas, TX). Class C: Glenda Short (Oklahoma City, OK). Class D: Judy Newhouse (Spring, TX). Class E: Josephine Flowers (West Memphis, AR).



Winter receiving his check from Chris Cree

## Mystery Word

by John Chew

Last issue's mystery word was CHOLLA: a type of cactus, not to be confused with HOLLA (to hallo), CHOLA (a Mexican-American girl) or CHALLA (a kind of bread). With an O, it makes ALCOHOL.

This month's mystery word is a bird whose six-letter name is an imitation of its call.

MYSTERY WORD CLUE 2 continued on p. 3



## Palms Sunday

from *WHAT HAPPENED IN VEGAS*, p. 1

Kantimathi said as much himself, when he explained that what motivated him to organize this event was wanting to give something back to the global SCRABBLE community, who had hosted him on so many past occasions.

One thing that I learned from the trip is that I don't spend nearly enough time in casinos, because every time I went into the Palms and walked through the frenetic casino area to get to the conference elevators, I felt like I was in a James Bond movie. Not a bad feeling, and one that was accentuated by the sleek, modern, high-tech decor of the conference rooms, and the cosmopolitan crowd in the tournament room. I couldn't help thinking, "Blofeld: through an A, you describe Leiter's poker hands. Want some respect? Go anagram SPECTRE."



The high point of the event for me was on Sunday morning, the last day of the tournament. I was scheduled to play top seed Dave Wiegand (Portland, OR), then Chris Lipe (Rome, NY), Marty Gabriel (Charleston, IL) and Nathan Benedict (Tucson, AZ), respectively sixth, fourth and second seeds. I had an 8-8 record, and had the modest ambition of ending the event with at least an even record. Then again, I'd never beaten Dave in a tournament game before, and out of the running for the prize money as I was, I thought it would be a real treat if I could win that first game. So I prayed hard to the Tile Gods, and my wish came true: a 465-449 win



John Chew, Sammi Odelana and pals



John Chew, Chris Cree and Sam Kantimathi

for me. It would have been a 600-300 blowout win against an ordinary player given the tiles Dave got, but I was happy with the win, and kept smiling as I proceeded to lose the next four straight games. Be careful of what you wish for.

The first OTCWL Early Bird was won by an undefeated Bruce D'Ambrosio and Wilma Pitzer (Englewood, OH). In the second, Michael Baker (Portland, OR) beat Bruce once to edge him out on spread as the high 5-1; Linda Wancel (Flushing, NY) was 5-1 in B and Steve Moniz (Manchester, NH) undefeated in C. In the Main Event, after 23 gruelling rounds of play over three days, it all came down on Sunday to just 61 points of spread, with Robin Pollock Daniel (Toronto, ON) 17-6 +1203 ahead of Jesse Day (Berkeley, CA) at +1142.

In CSW play, the Early Bird was won by James Curley (New York, NY) 5-1 +461. The Main Event, a 23-round round robin, was even closer than in OTCWL. Going into the last round, Craig Beevers (GBR) at 18-4 +1805 led Nathan Benedict +1655, but because of the round robin format, they weren't playing each other. Nathan lost a close game 418-434 to Dave Wiegand; Craig lost a 375-546 blowout to third seed Evan Berofsky (Thornhill, ON). The result? Nathan won the guaranteed \$2,000 top prize by a margin of just five points of spread.

I wonder what Sam will come up with next year to top all that!

## New & Returning Clubs

by Mary Rhoades

We welcome the following new and returning official clubs and directors to our roster:

#801 West Memphis, AR, directed by Josephine Flowers;

#377 Fresno, CA, Alex Jaech;

#763 Bradenton/Manatee County, FL, Traci Kanaan;

#90 Lafayette, LA, Elaine Livers;

#808 Peterborough, NH, Michelle Montgomery and Ed Liebfried;

#809 Brampton, ON, Shan Abbasi;

#655 Pittsburgh, PA, Bob Hagerty; and

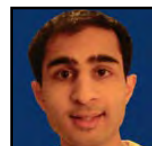
#543 Charlottesville, VA, Barry Keith.



Alex Jaech



Traci Kanaan

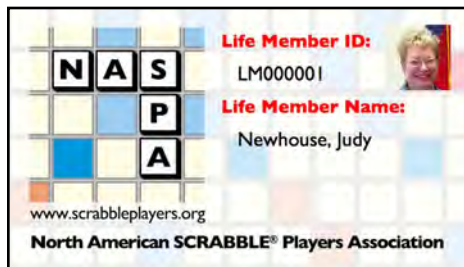


Shan Abbasi

## Life Membership

by the Membership Committee

One of the most frequently asked questions of our committee over the years has been when we would begin offering life memberships. It's taken us a while to assess what other comparable organizations do and to figure out what would be fairest for our community, but we are now ready to announce the availability of NASPA Life Memberships and to thank our very first Life Member, Judy Newhouse (Spring, TX), who is now NASPA Member #LM000001.



We also thank our other new Life Members. As we go to press, they are: Ellis Wyer (La Jolla, CA), Mollie Braverman (Camarillo, CA), Ralph Crosby (Los Angeles, CA), Ruth Sawyer (Bozeman, MT), Mary Rhoades (Bedford, TX), Toni Douglas (Monroe, GA), Gene Roop (Sallisaw, OK), Eunice Smith (Southfield, MI), Sophia Murzin (Dearborn Heights, MI), Walter Konicki (Seven Hills, OH), Vivienne Muhling (Toronto, ON) and Ardys Daniells (Kitchener, ON).



Vivienne Muhling

Here's the deal. Life memberships cost \$20 per year until your 80th birthday. So if your current membership expires when you are 50, a life membership costs (80-50)\*\$20 = \$600. If you are already at least 80 years old and a current NASPA member, you can upgrade to being a life member just for the asking. If you are at least 80 years old and not a current NASPA member, your life membership will cost you the same as a regular year's membership: \$30.

We are still working out what perks to offer to our life members, aside from the slightly fancier membership card shown below and mention in the Bulletin, and welcome suggestions from our life members.

If you have any questions about this program, please email the Membership Committee at [naspa-member@yahoo.com](mailto:naspa-member@yahoo.com).

## Mystery Word Clue 2

from MYSTERY WORD, p. 2

If you add an R and an anagram, you make one of the 75 OSPD4 main entry adverbs that do not end in -LY.

MYSTERY WORD CLUE 3 continued on p. 4

## Know The Rules

by Craig Rowland



Craig Rowland

This situation involves poorly positioned tiles. A player, with exactly 0:00:00 reading on his clock, had hurriedly placed two tiles on the board such that one tile was so far off the grid that I considered it a disconnected play. What was the ruling on such a play? This issue in fact was addressed in the last rules update from 16 June 2011. I quote from the new rules amendments:

*We slightly adjusted the wording of III.F.3., and we added III.F.4. and III.F.5. to specify how to handle sloppily placed or disconnected tiles. Tiles are considered to be in whatever square they most cover, or to be off the board if more of the tile is off the board than in any square. The player whose turn follows a play in which tiles are not completely placed in their squares may neutralize the clock to place them in the squares they most cover. If a tile is flipped, that player may restart the opponent's clock until the tile is properly faced. If tiles are disconnected, the play is illegal and MUST be removed with loss of turn.*

I considered the player's tile in this case to be disconnected, that is, so far off position that it lay "floating" on the board. I ruled that the play was illegal and had to be removed. Only seconds after I arrived at the table, the player who had played the stray tile moved his misplaced tile into its proper slot. When a ruling is being made, the evidence must remain as-is, and I therefore could not explain my decision for the tile being disconnected since it was no longer in its original position.

The game proceeded yet the player who had the next turn could not play, as he was stuck with an unplayable letter. Therefore, the player who had originally played the disconnected tile had the opportunity to make his play again, this time properly, but he suffered a ten-point penalty for going overtime.

## Certified Directors

by Mary Rhoades

Congratulations to the following apprentice directors on passing their tests: Charlie Bond (who will be taking over club #646 in Nashville, TN from Alvin Haney), Alex Jaech (Fresno, CA) and Shauna Petrie (Mississauga ON).

The following directors have graduated their apprenticeships and are now full directors in their own right: Cesar Del Solar (Alhambra, CA), Kieran O'Connor (DeWitt, NY) and William R Woodward (Saskatoon SK).

We welcome back former NSA club director Traci Kanaan, who now runs NASPA Club #763 in Bradenton/Manatee Co., FL.

## New World High Game SCRABBLE Record Set

by the Bulletin Committee

It's not often that we get to run this headline in consecutive issues, but as we were finalizing the last issue, we received word that Toh Weibin, a 21-year-old Singaporean undergraduate student in London best known overseas as the 2007 World Youth SCRABBLE Champion, had surpassed Joel Sherman's (Bronx, NY) 803-285 victory over Bradley Robbins (Windham, NH) at Stamford, CT. Playing on January 21st in the fifth round of the Northern Ireland SCRABBLE Championship in Belfast, Toh defeated Rik Kennedy 850-259 (IRL) in internationally rated Collins lexicon play. Sherman still holds the OTCWL tournament record, but a new bar has now been set for players seeking the ultimate blowout win.



Toh Weibin



Rik Kennedy

In his record-setting game, Toh exchanged tiles once to Kennedy's twice, and played all six of the bingos in the game: VOGUIEST# (64), ANAPHOR (78), triple-triple ALLiGATE# (122), ACETATE (71), triple-triple BEAUXITE# (275) and his outplay, REMAILED (63). Each player made 14 plays, and the power tiles were surprisingly well balanced: Kennedy got SSS-JQZ and Toh got the remaining ??SX. Toh's racks were not especially so, with four racks with no more than a single vowel, and two with only two consonants.

In the Quackle board diagram below, words which are acceptable only in Collins play and not OTCWL are shown in pink. Under international rules, players followed the old American box-top rules in adding and subtracting his opponents final tiles (IN). If the game had been played according to NASPA rules, the final score would have been an even higher 852-261.



## 2012 NSC Update

from NSC UPDATE, p. 1

We're looking forward to even bigger numbers in the next two years. Next year's site is a loosely guarded secret, but will be announced at the Town Hall meeting in Orlando; buzz is already building up well for that event. (Hint: the town is mentioned elsewhere in this issue.) For 2014, we are committed to bringing the NSC to the Northeastern United States, and if the eager response we have seen from the players of that region during our summer site inspection tour is any indication, that should be a big year for the Championship.

This year in Orlando, in addition to the usual game and meetings, we'll also have an Evening Musicale, a Trivia Contest featuring Jeopardy! Champion Jason Keller, a Tag-Team Tourney, a screening of the movie QWERTY, and the presence on-site of Merriam-Webster and Electronic Arts.

Players should remember that mandatory check-in for the tournament is on Friday, August 10, from 10:00 A.M. to 10:00 P.M. Those unable to check in during that time should ask a friend to do so by proxy.

If you are driving to the event each day, please be sure to ask for discount parking vouchers at check-in, to ensure you get the \$17/day event rate.

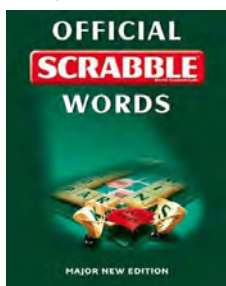
Please visit the event website for more details, last-minute bulletins, and live coverage.

## NSC 2012 Collins News

by the Championship Committee

On May 6, the NASPA Advisory Board (AB) responded to requests from Collins players by overriding the Championship Committee's original ruling that the inaugural Collins (CSW) division at the 2012 National SCRABBLE Championship should only take place if 40 players had paid their entry fees by that date, instructing instead that the division should be contested with the current 24, plus any players who may register during the remainder of the registration period. There were nine votes in favour of doing so, one against and one abstention.

Board members who supported the vote said they wanted to recognize the commitment of the 24 who had paid their entry fees without even knowing whether or not the event would take place, and their value to the greater competitive SCRABBLE community. They also hoped that now that the CSW division would definitely take place, many more less certain players might join the division to bring it to the originally planned size. As we go to press, we have 41!



## Byes and Gibsons

by the Pairing Committee

The NASPA Pairing Committee was asked to clarify a possible contradiction in the Director's Manual (DM). In its discussion of divisions with an odd number of players, the DM says essentially that a bye should be awarded to the lowest-ranked player who has not yet had more byes than another player. However, in its discussion of what to do when a player has clinched a top place and the now familiar process called Gibsonization (named for David Gibson, winner of the 1995 Super Stars SCRABBLE Championship with more than a round to spare), it says that such players should not play anyone who is in contention for prizes.

The contradiction is this. Some directors believe that the best way to avoid having a Gibsonized player affect other players' outcomes in an odd division is to assign the Gibsonized player (or in the case of multiple simultaneous Gibsonized players, the highest-ranked Gibson) byes for the rest of the tournament (or as long as the division remains odd). Others believe that Gibsonized players should not be treated any differently where byes are concerned, and that they may be entitled to play the number of games that they originally thought they would play when they registered for the event.

It turns out that players, and even the members of this committee, are fairly evenly divided on which is the correct interpretation. It is therefore the decision of this committee that the DM should be updated to indicate that it is up to the tournament director's discretion what method to use to assign byes in a situation where one or more players have been Gibsonized.

## Bulletin Committee

by the Bulletin Committee

With only two issues now published in 2012, it is clear that the publication schedule for the Bulletin is unacceptably delayed. Between this issue and the next, we will be reassigning responsibilities within the committee and rebranding it as the new Publications Committee, and see if we can get back to monthly issues. Astute readers may already have noticed the Publications Committee's credit in the 2012 edition of the Official Tournament Rules.

The Bulletin is an important publication of record for NASPA; you can also read about what's new at the association on any of our social media feeds: Twitter, Facebook and Google+.

If you're interested in helping with the Bulletin, we can always use help with design (using InDesign), writing and proofreading.



David Gibson

## Committee Updates

by the Web Committee

Jim Pate (Birmingham, AL) and the Dictionary Committee are recruiting volunteers to help research changes to the next edition of the word list. Last month, they were joined by another new committee member, Paul Mulik (Joplin, MO). Paul is rated in the 1500s and has been playing competitively since 2004. This is Paul's first NASPA committee position.



Paul Mulik

Michael Thelen (West Jordan, UT), a sitting member of the Technology Committee since its inception, has also agreed to join the Rules Committee. Michael is the director of NASPA Club #173 in Murray, UT, has played competitively since 2005, and is rated in the 1700s, but is best known in the community as the author of the popular word lookup and study tool, Zyzzyva.



Michael Thelen

Thank you very much for volunteering, Paul and Michael!

## How Smart Are You?

by the Bulletin Committee

NASPA officials recently met with representatives of American Mensa, Ltd. to explore areas of common interest, beginning with the idea that competitive SCRABBLE players and members of an association for people who perform well on standardized intelligence tests are both interested in their intellectual potential and in meeting like-minded individuals.



Membership in Mensa is limited to those who are among the most intelligent 2% of the population, as measured by accepted tests. The easiest way to join is to submit evidence of prior testing, and now for a limited time, it's even easier for NASPA members. If you use the special promotion code "NASPA" when completing the Mensa application online, you'll receive a \$10 discount on their test verification fee.

If there are other membership organizations that you would like NASPA to reach out to, please send your suggestions to us at [info@scrabbleplayers.org](mailto:info@scrabbleplayers.org).

## Mystery Word Clue 3

from MYSTERY WORD CLUE 2, p. 3

The mystery word has a homophone meaning a form of contract bridge for three players.

MYSTERY WORD CLUE 4 continued on p. 5

## Word Buzz

by the Bulletin Committee

Our regular NASPA In The News section relies on our members and an automated search to let us know when NASPA members have made it into the media through their SCRABBLE-related activities. This column lists news about our members' non-SCRABBLE activities and the SCRABBLE world beyond our own competitive community.

2004 National SCRABBLE Champion Trey Wright was the subject of a glowing review in the *Washington Post* on February 27 for his piano recital at the National Gallery of Art, "a program of impressionistic works that was remarkable for its extraordinary freshness, subtlety and originality of thought."



Trey Wright

On March 1st, the *New Yorker's* Culture Desk column brought us up to date on what 1997 World SCRABBLE Championship runner-up Matt Graham (Queens, NY) has been doing lately, rekindling his comedy career. The article features a photo of Matt credited to Ann Sanfedele (New York, NY).



Matt Graham

On March 18, the *Daily Mail* revealed, three years after the fact, that Lord Frederick Windsor, 38th in the line of succession to the British throne, had proposed to his now wife, Sophie Winkleman, by leaving his proposal spelled out on their Travel SCRABBLE set as they set out on a picnic.

*Jeopardy!* champion Jason Keller added to his list of achievements with a personal best Division C third-place at the American Crossword Puzzle Tournament.

## Long List: 2nd Printing

by the Dictionary Committee

We have recently worked with our partners at NSA Word Gear to bring the official reference for words of 10–15 letters back into print after a year's hiatus. Staff at Word Gear had reported a surprisingly strong demand for the print edition of the book, and the Club/Director Committee had also been hearing from prospective new directors who were having trouble finding a copy of it during their training process.

The new printing does not change the list of acceptable words, but includes updated front matter provided by and referencing NASPA.



The next major changes to the lexicon itself should take place around the end of 2013. Representatives of the Dictionary Committee met with Merriam-Webster in Springfield, MA in July to discuss plans for OSPD5 and TWL3.

## NASPA in the News

by the Bulletin Committee

Leading up to February 4, *Catonsville Patch* advertised the Charm City SCRABBLE Challenge event, directed by Linda Oliva.

On February 6, the *Baltimore Sun* reported on Linda Oliva's (Lisbon, MD) tournament.

On February 17, *TheStar* reported on Toh Weibin's record-setting game.

On February 9, the *Canadian Jewish News* reported on Estelle Matthews (Calgary, AB) attending the Israeli Open.

*Bedford-Katonah Patch* announced that on February 20, Cornelia Guest would be launching another season of School SCRABBLE activities at a local library.

On February 28, the *Greene County Daily World* reported on School SCRABBLE activities at Eastern Greene School, and plans for local student Lily Haines to partner with Cooper Komatsu (Los Angeles, CA) at the National School SCRABBLE Championship (NSSC).

On March 1, Examiner.com reported on recent events at NASPA Club #658 in Des Moines, IA, and mentioned their upcoming tournament.

On March 2, the *Missourian* recommended Meg Wolitzer's SCRABBLE novel, *The Fingertips of Duncan Dorfman* in a collection of word-themed fiction.

On March 5, the *Greene County Daily World* followed county School SCRABBLE players to the state championships, and once again mentioned Cooper Komatsu.

On March 12, Frontier College, a charitable foundation for adult literacy, posted a press release to Canada NewsWire that was picked up by various sources, announcing that (with the unmentioned support of a large crew of volunteers from NASPA Club #3 in Toronto, ON) they had raised a record \$380,000 at this year's SCRABBLE Corporate Challenge, where deep-pocketed teams from the financial centre of Bay Street competed for trophies and glory in an evening of SCRABBLE play.

On March 12, *Slate's* Lexicon Valley featured a lengthy interview with Stefan Fatsis (Washington, DC) about whether the game of SCRABBLE is a math game or a word game.

On March 18, the *Philadelphia Inquirer* reported on the ASAP Philly Plays SCRABBLE program, including an interview with and photograph of John Green (Philadelphia, PA).

On March 22, the National SCRABBLE Association (NSA) posted an early press release announcing the upcoming NSSC on PR NewsWire; a large number of news outlets picked up the story.

On March 29, *Wired* ran an interview with Jason Katz-Brown (Tokyo, JPN) about basic SCRABBLE strategy.

## Official Tournament Rules: 2012 Edition

by the Rules Committee

A major new revision of the *Official Tournament Rules* took effect on June 27, 2012, based on yearlong deliberations by the Rules Committee (Jan Dixon, chair), redesigned by the new Publications Committee, and suggestions from the entire competitive community. The 53-page *Rules* can be downloaded in PDF form from our website, together with a 5-page document listing the major changes. Here's an even briefer list of what's new.

- The silence required during play is more strictly defined.
- The list of reasons for which a kibitzer may intervene now includes pointing out stopped clocks and incorrectly (re)moved tiles.
- Director's discretion is now explicit.
- Correcting a tile's position or orientation now counts the same as correcting an announced play score toward earning a minute's clock time in compensation.
- A severe penalty was added for the unusual situation where a player overdraws to empty the bag on his/her own turn.
- There is a now a rule addressing the situation where tiles are exchanged from an overdrawn rack.
- The rule on end-of-game underdrawing now applies even when Player B does not empty the bag.
- Games are now automatically terminated when one player reached ten minutes of overtime.
- The *Rules* now include a redesigned index and glossary.



## Mystery Word Clue 4

from MYSTERY WORD, p. 4

The mystery word looks like it could be one meaning to utter an interjection expressing delight.

## March Monthly Leaders

by the Ratings and Recognition Committee

This section lists the players with the best results in March 2012.



Winter, Paul Mistrette

### Most Rated Wins

1. 27 Winter (TX)
2. 24 Whitley, David (CA)
3. 21 Pivovarov, Juraj (AB)
4. 19 Stock, Daniel (OH)
4. 19 Clifford, Wayne (AB)

### Most Games Played

1. 47 Winter (TX)
2. 39 Whitley, David (CA)
3. 36 Pivovarov, Juraj (AB)
4. 35 Tillekeratne, Siri (AB)
4. 35 Clifford, Wayne (AB)

### Most Games Undeclared

1. 7 Mistrette, Paul (NJ)
1. 7 Rothbart, Jason (VA)
3. 4 Taylor, Flora (NC)
3. 4 Poole, Cathy (NC)

### Biggest Rating Gains

1. +149 = 1344 Bissonnette, Jane (WA)
2. +129 = 994 Rothbart, Jason (VA)
3. +123 = 1765 Kamen, Maddy (CA)
4. +107 = 1418 Mistrette, Paul (NJ)
5. +100 = 882 Sienkowski, Mark (MI)

### Highest Initial Rating

1. 1243 Burri, Mike (BC)
2. 1180 Smith, Curtis (NJ)
3. 933 Thomas, Sonya (PA)
3. 933 Burgess, Ward (PA)
5. 930 Loy, Eric (IL)

## March Results

by the Ratings and Recognition Committee

This section lists all players who finished in the top three places in their division in a rated tournament ending in March 2012, together with their wins, losses, cumulative spread, old and new ratings. Out-of-state winners are identified with their home state (or province).



Rafi Stern, Thomas Hall, Nigel Peltier

### Vancouver (Richmond), BC: March 2

DIVISION A (8 PLAYERS)			
6-2 +236	1931	1952	Stern, Rafi (WA)
5-3 +185	1928	1934	Peltier, Nigel (OR)
5-3 +51	1767	1795	Baker, Michael (OR)
DIVISION B (8 PLAYERS)			
8-0 +680	1475	1585	Clifford, Wayne (AB)

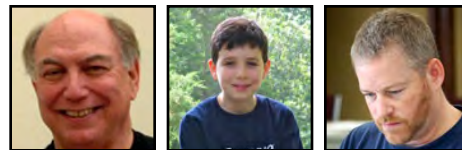
6-2 +515	1517	1550	Weber, Murray
4-4 +58	1449	1452	Romann, Judy (WA)
DIVISION C (14 PLAYERS)			
7-1 +791	1201	1253	Smith, Judy
6-2 +268	1266	1284	Craig, Stuart
5-3 +180	1190	1186	Willis, Reese

### Pittsburgh, PA: March 3

DIVISION A (6 PLAYERS)			
5-1 +322	1679	1718	Hall, Thomas M
4-2 +446	1723	1732	Alexander, Dorcas
3-3 +126	1707	1693	Lum, Mark
DIVISION B (6 PLAYERS)			
5-1 +455	1088	1149	Rizzo, James
4-2 +165	1224	1235	Smith, Karen
3-3 +41	1139	1139	Wittman, Dianne (NY)
DIVISION C (6 PLAYERS)			
6-0 +488	989	1050	Stock, Joyce (OH)
4-2 +80	851	894	Conley, Patricia
3-3 +202	991	973	Povis, Brenton (WA)
DIVISION D (6 PLAYERS)			
5-1 +353	0	933	Thomas, Sonya
5-1 +310	0	933	Burgess, Ward
4-2 +195	525	594	Gasperetti, David (DC)

### Vancouver (Richmond), BC: March 3-4

DIVISION A (21 PLAYERS)			
12-2 +247	1934	1992	Peltier, Nigel (OR)
10-4 +311	1668	1773	Whitley, David (CA)
9-5 +617	2042	2033	Leong, James
DIVISION B (28 PLAYERS)			
12-2 +942	1489	1578	Turney, Jill
10-4 +829	1626	1618	Pivovarov, Juraj (AB)
10-4 -105	1195	1344	Bissonnette, Jane (WA)
DIVISION C (28 PLAYERS)			
12-2 +610	1519	1528	Padmanabhan, Sudhir
11-3 +484	996	1093	Gudlaugsson, Sunshine
9-5 +801	0	1243	Burri, Mike



Gary Moss, Mack Meller, Mark Edelson

### Laguna Woods, CA: March 4

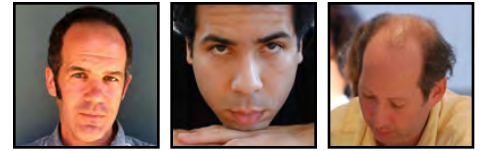
(4 PLAYERS)			
5-2 +370	1469	1564	Moss, Gary
5-2 +170	1867	1878	Knapp, Rachel
3-4 +68	1804	1788	Cassidy, Jim

### Norwalk, CT: March 10

DIVISION A (10 PLAYERS)			
6-2 +358	1832	1862	Meller, Mack (NY)
5-3 +270	1865	1875	Rau, Stefan (NY)
5-3 +3	1676	1711	Friedman, Andrew (NY)
DIVISION B (10 PLAYERS)			
5-3 +310	1597	1611	Barkman, Peter (NY)
5-3 +299	1607	1619	Konipol, Nancy (NY)
5-3 +7	1541	1563	Randall, Brandon
DIVISION C (10 PLAYERS)			
6-2 +512	1246	1281	Gauthier, Kevin (NY)
6-2 +142	1350	1376	Cole, Judy (MA)
5-3 +342	1431	1424	Kelly, Joan (NY)

### Guelph, ON: March 11

DIVISION A (6 PLAYERS)			
5-1 +166	1740	1803	Edelson, Mark
4-2 +95	1767	1790	Kaufman, Zev
3-3 +96	1699	1710	Vijayakumar, Sinna
DIVISION B (6 PLAYERS)			
5-1 -63	1589	1638	Lobo, Yvonne
4-2 -112	1558	1579	McCall, Heather
3-3 +646	1628	1623	Newman, Geoffrey
DIVISION C (6 PLAYERS)			
4-2 +217	1512	1517	Rodriguez, Alex (NY)
4-2 +85	1466	1476	Fernando, Priya
3-3 +125	1150	1170	Spanier, Crayne
DIVISION D (6 PLAYERS)			
5-1 +487	1099	1129	Farini, Sharmaine
4-2 +101	1132	1134	Petrie, Shauna
4-2 -11	1110	1119	Bowman, Joseph



Peter Armstrong, Winter, Adam Townsend

### Berkeley, CA: March 11

DIVISION A (8 PLAYERS)			
5-1 +308	1859	1896	Armstrong, Peter (WI)
5-1 +280	1838	1882	Morgan, Chris Patrick
4-2 +206	1998	2004	Brockmeier, Doug
DIVISION B (8 PLAYERS)			
5-1 +408	1556	1605	Frodyma, KC
4-2 +76	1619	1630	Levin, Robin
3-2 -95	1494	1512	Weissman, Emely
DIVISION C (6 PLAYERS)			
4-2 +323	1366	1382	Dolgenos, Peter
4-2 +169	1249	1279	Gage, Marilyn
4-2 +153	1347	1366	Unger, Dan
DIVISION D (6 PLAYERS)			
5-1 +391	1049	1106	Norman, Jack
5-1 +239	981	1026	Scott, S E
3-3 -36	759	770	Parry, Sandy

### Independence, OH LCT: March 13

(8 PLAYERS)			
4-0 +127	920	936	Brown, Lisa (IL)
3-1 +308	1744	1741	Stock, Daniel
2-2 +107	1168	1169	Sheppard, Christopher

### Dallas, TX: March 16-18

(70 PLAYERS)			
15-5 +1356	1767	1848	Winter
15-5 +979	1793	1855	Day, Darrell
14-6 +1045	2041	2037	Wiegand, Dave (OR)

### Bayside Queens, NY: March 17

DIVISION A (8 PLAYERS)			
7-2 +209	1609	1659	Townsend, Adam
6-3 +319	1609	1636	Avrin, Paul
5-4 +521	1711	1701	Friedman, Andrew
DIVISION B (10 PLAYERS)			
7-2 +576	1210	1256	Tsigos, Chris
6-3 +601	1160	1193	Levine, Carol
5-4 +155	1135	1152	Nussbaum, Phyllis

MORE MARCH continued on p. 6

## More March Results

from MARCH RESULTS, p. 6

### DIVISION C (8 PLAYERS)

6-3 +324 939 959 Nahaczewski, Pat  
6-3 +296 935 956 Borsuk, George  
6-3 +143 915 938 Reeser, Sally (PA)



Jason Idalski, Richard Popper, Timothy Bottorff

### Elyria, OH: March 17-18

#### DIVISION A (18 PLAYERS)

10-3 +1133 1918 1921 Idalski, Jason (MI)  
9-4 +482 1741 1758 Stock, Daniel  
9-4 +304 1441 1536 Ravichandran, Carol (MI)

#### DIVISION B (16 PLAYERS)

9-4 +410 936 1005 Brown, Lisa (IL)  
9-4 +209 1027 1071 Kamath, Shubha (NY)  
8-4 +253 1192 1194 Popich, Eileen

### Philadelphia, PA: March 18

#### DIVISION A (16 PLAYERS)

6-1 +407 1721 1750 Popper, Richard (DE)  
6-1 +168 1566 1631 Berg, Verna Richards (NY)  
5-2 +438 1557 1589 Brook, Mitchell

#### DIVISION B (14 PLAYERS)

7-0 +688 1311 1418 Mistrette, Paul (NJ)  
5-2 +283 1238 1283 Calabro, Marian (NJ)  
5-2 +257 1363 1388 Cohen, Joanne (MD)

#### DIVISION C (14 PLAYERS)

5-2 +501 1218 1233 Siciliano, Eric (NJ)  
5-2 +388 1208 1225 Dlugosz, David  
5-2 +68 1139 1161 Feidel, Jan (DE)

#### DIVISION D (16 PLAYERS)

6-1 +698 896 947 Brower, Ruth (DE)  
6-1 +524 859 936 Yaffe, Robert (MD)  
5-1 +160 0 1180 Smith, Curtis (NJ)

### Palm Harbor, FL: March 24

#### DIVISION A (8 PLAYERS)

6-2 +474 1604 1617 Bottorff, Timothy  
6-2 +420 1630 1641 Alim, Mohamed  
5-3 +249 1336 1369 Fisher, Jan

#### DIVISION B (8 PLAYERS)

6-2 +248 1230 1265 Rothbart, Sam (NY)  
5-3 +171 1272 1280 Bailey, Justin  
5-3 +132 1268 1278 Hellmann, Angela

#### DIVISION C (7 PLAYERS)

8-0 +530 865 994 Rothbart, Jason (VA)  
6-2 +246 906 923 Cass, Pamela (OH)  
4-4 +167 886 869 Green, JC

### Fort Lauderdale, FL: March 24

#### DIVISION A (10 PLAYERS)

7-1 +422 1205 1282 Heartberg, Mervet (NY)  
5-3 +154 1176 1203 Ford, Judith  
5-3 +127 1177 1203 Doyle, Dawn

#### DIVISION B (10 PLAYERS)

6-2 +375 936 961 Diamante, Jeri (NJ)  
6-2 +10 913 943 Weithers, Merlene  
5-3 +51 913 925 Levin, Cheryl

### Cambridge, ON: March 24

#### DIVISION A (16 PLAYERS)

6-1 +704 1938 1955 Berofsky, Evan  
5-2 +377 1623 1658 Newman, Geoffrey  
5-2 +332 1760 1785 Sinke, Arie

#### DIVISION B (16 PLAYERS)

6-1 +510 1382 1440 Sinanan, Lilla  
6-1 +255 1366 1433 Ubeika, Shelley  
5-2 +495 1411 1434 Sealy, Trevor

#### DIVISION C (16 PLAYERS)

6-1 +526 1171 1213 Turner, Kevin  
5-2 +349 1019 1072 McClennan, Mike  
5-2 +119 1126 1156 Schlegel, Matt

#### DIVISION D (20 PLAYERS)

6-1 +117 862 923 Elwood, Ann  
6-1 +87 943 980 Krook, Dave  
5-2 +321 780 828 Gosso, Susan



Evan Berofsky, Juraj Pivovarov, David Whitley

### Calgary, AB: March 24-25

#### DIVISION A (14 PLAYERS)

10-4 +998 1618 1633 Pivovarov, Juraj  
10-4 +556 1561 1589 Larocque, Matthew  
10-4 +272 1436 1488 Yocom, Wesley

#### DIVISION B (11 PLAYERS)

11-3 +675 1058 1103 Bergeron, Betty  
11-3 +540 958 1024 Weis, Rodney  
8-6 +374 1163 1125 Settle, Ben

### Long Beach, CA: March 25

#### DIVISION A (12 PLAYERS)

5-2 +468 1709 1747 Whitley, David  
5-2 +328 1733 1765 Kamen, Maddy  
5-2 +172 1736 1766 Howard, Ronald

#### DIVISION B (12 PLAYERS)

5-1 +403 1218 1278 Strick, Richard  
5-2 +238 1241 1276 Ross-Greene, Andrea  
5-2 +71 1447 1458 Yenser, Jessup

#### DIVISION C (12 PLAYERS)

6-1 +188 1149 1190 Schutz, Arna  
5-2 +269 920 1019 Goldsmith, David  
4-3 +489 1120 1121 Kisich, Esther

#### DIVISION D (10 PLAYERS)

5-2 +196 814 844 Belinkoff, Kevin  
5-2 +117 765 793 Hughes, Margaret  
4-3 +306 714 729 Komatsu, Deborah

### Myrtle Beach, SC: March 30

#### DIVISION X (6 PLAYERS)

3-1 +285 1802 1801 Fischer, Ryan (NC)  
3-1 -15 1336 1356 Rackham, Anita (QC)  
2-2 +196 1547 1547 Gottlin, Liz (NC)

#### DIVISION Y (4 PLAYERS)

4-0 +262 1179 1236 Taylor, Flora (NC)  
2-2 +8 1241 1236 Shuman, Bruce (NC)  
1-3 -38 1120 1101 Bianca, Linda

#### DIVISION Z (4 PLAYERS)

4-0 +770 999 1008 Poole, Cathy (NC)  
2-2 -105 248 272 Lieberman, Eliza (NC)  
2-2 -263 500 497 Howe, Gay (NC)

### Linden, MI: March 31

#### DIVISION A (12 PLAYERS)

6-1 +693 1607 1670 Knapp, Stephen  
5-2 +135 1407 1468 Stafford, Mike (OH)  
4-3 +134 1758 1748 Stock, Daniel (OH)

#### DIVISION B (8 PLAYERS)

5-2 +673 1204 1213 Sutherland, Margaret  
5-2 +64 1047 1075 Stock, Joyce (OH)  
5-2 -105 921 972 Van Tol, Arthur

### Danville, IL: March 31

#### DIVISION A (8 PLAYERS)

6-1 +382 1742 1788 Broering, Marc (KY)  
5-2 +237 1664 1694 Slankard, Lisa  
4-3 +233 1687 1694 Garner, Scott (TN)

#### DIVISION B (8 PLAYERS)

6-1 +186 1470 1512 Smith, Samuel (IN)  
4-3 +161 1513 1507 Lakernick, Harriette  
4-3 +144 1301 1320 Fultz, John

#### DIVISION C (8 PLAYERS)

5-2 +229 874 931 Thompson, Troy (IN)  
5-2 +161 1021 1050 Bogle, Julia (IN)  
5-2 -127 914 1000 Fish, Tim (IN)

#### DIVISION D (8 PLAYERS)

6-1 +251 874 927 Mojica, Avery (KS)  
5-2 +160 830 860 Roberdeau, Joe (OH)  
4-3 +197 851 858 Jones, Chuck

#### DIVISION E (14 PLAYERS)

6-1 +845 740 829 Sitler, Penny (IN)  
6-1 +104 592 673 Hamburg, Tootsie  
5-2 +534 0 930 Loy, Eric



Ryan Fischer, Stephen Knapp, Doug Riblet

### Austin, TX: March 31

#### DIVISION A (6 PLAYERS)

5-1 +229 1733 1781 Riblet, Doug  
5-1 +226 1768 1798 Canik, Matt  
4-2 +287 1910 1909 Thevenot, Geoff

#### DIVISION B (6 PLAYERS)

4-1 +304 1429 1448 Randolph, Jason  
4-2 +303 1474 1479 Williams, Jacob  
3-2 -67 1155 1189 Donegan, Michael

#### DIVISION C (4 PLAYERS)

5-1 +684 1107 1126 Titzman, Joey  
4-2 +416 1085 1087 Rivard, Alexander  
3-3 -527 624 660 Titzman, Jack

## April Monthly Leaders

by the Ratings and Recognition Committee

This section lists the players with the best results in April 2012.

### Most Rated Wins

- 27 Cole, Judy (MA)
- 27 Melvin, Cheryl (MI)
- 26 Horowitz, Dan (DE)
- 25 Tran, Eric (AB)
- 25 Gabriel, Marty (IL)

STILL MORE RESULTS continued on p. 7

## Still More Results

from MORE APRIL RESULTS, p. 7



Judy Cole

### Most Games Played

- 62 Cole, Judy (MA)
- 43 Whitmarsh, Bradley (MA)
- 41 Melvin, Cheryl (MI)
- 40 Gabriel, Marty (IL)
- 40 Keller, Jason (NJ)

### Most Games Undeclared

- 8 Reed, Irving (FL)
- 8 Cahanin, Eric (LA)
- 7 Epstein, Paul (MI)
- 6 Vijayakumar, Sinna (ON)
- 5 Mason, Christopher (NH)

### Biggest Rating Gains

- +235 = 1497 Goldstein, Danny (CA)
- +215 = 1579 Seetharam, Prashanth (MA)
- +169 = 628 Batra, Ruchi (OH)
- +162 = 1003 Koziol, Clay (NE)
- +161 = 1368 Dlugosz, David (PA)

### Highest Initial Rating

- 1359 Mason, Christopher (NH)
- 1020 Arnold, Michael (MO)
- 946 Black, Jonathan (NY)
- 888 Terpening, Devon (MA)
- 842 Adam, Kay (SD)

## April Results

by the Ratings and Recognition Committee

This section lists all players who finished in the top three places in their division in a rated tournament ending in April 2012, together with their wins, losses, cumulative spread, old and new ratings. Out-of-state winners are identified with their home state (or province).



Lou Cornelis, Steve Hartsman, Paul Epstein

### Rochester (Webster), NY: March 31 - April 1

DIVISION A (18 PLAYERS)			
10-4	+545	1705	1724 Cornelis, Lou (ON)
9-5	+811	1726	1722 Hildebrand, Jeremy (ON)
9-5	+457	1555	1589 Broersma, Jason (ON)
DIVISION B (18 PLAYERS)			
12-2	+702	1114	1265 Farini, Sharmaine (ON)
10-4	+397	1255	1289 Scaglione, Ida
9-5	+422	1284	1290 Blake, Daniel
DIVISION C (14 PLAYERS)			
11-3	+508	923	970 Tartaro, Peggy
11-3	+320	805	950 Holowka, Peter
10-4	+625	808	895 Sherk, Ada (ON)

### Danville, IL: April 1

DIVISION A (8 PLAYERS)			
6-1	+364	1695	1749 Hartsman, Steve (WI)
5-2	+28	1694	1719 Slankard, Lisa
4-3	+239	1694	1699 Gabriel, Marty
DIVISION B (8 PLAYERS)			
5-1	-16	1149	1231 Tremont, Thomas
5-2	+457	1320	1349 Fultz, John
4-3	+138	1271	1286 Markelis, Daiva
DIVISION C (8 PLAYERS)			
5-2	+431	1000	1050 Fish, Tim (IN)
5-2	+99	1034	1058 Palmer, Beth (IN)
4-3	+256	1060	1061 Dixon, Barbara (IN)
DIVISION D (8 PLAYERS)			
6-1	+570	858	907 Jones, Chuck
5-2	-6	854	877 Chan, Harry
4-3	+186	862	864 Nalepka, James
DIVISION E (8 PLAYERS)			
6-1	+579	0	1020 Arnold, Michael (MO)
6-1	+522	677	735 Albin, Becky
4-3	+247	655	669 Hawker, Cheryl

### Linden, MI: April 1

(6 PLAYERS)			
7-0	+789	1867	1888 Epstein, Paul
4-3	+559	1748	1724 Stock, Daniel (OH)
3-4	-131	1213	1236 Sutherland, Margaret



Bruce D'Ambrosio, Mike Frentz, Stephen DeBacco

### Laguna Woods, CA: April 1

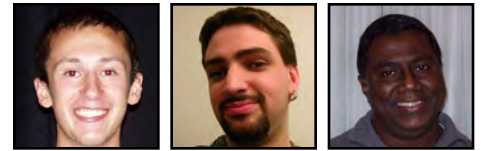
(6 PLAYERS)			
6-1	+378	1681	1703 D'Ambrosio, Bruce
4-3	+343	1720	1701 Cassidy, Jim
4-3	+111	1346	1364 Finley, Chad (NV)

### Berkeley, CA: April 1

DIVISION A (7 PLAYERS)			
5-2	+484	1843	1864 Frentz, Mike
5-2	+136	1896	1912 Armstrong, Peter
4-3	+146	1882	1884 Morgan, Chris Patrick
DIVISION B (6 PLAYERS)			
5-1	+177	1680	1713 Ward, Bruce
4-2	+171	1605	1623 Frodyma, KC
4-2	+70	1624	1643 Karris, John
DIVISION C (6 PLAYERS)			
5-1	+147	1440	1490 Stevens, Mary Aline
4-2	+405	1493	1507 Wiley, John
4-2	+250	1470	1486 Whitman, Alan
DIVISION D (6 PLAYERS)			
5-1	+375	1315	1334 Demeter, Jon
4-2	+152	908	963 Mocine, Joan
3-3	+103	1026	1039 Scott, S E

### Akron, OH LCT: April 5

(5 PLAYERS)			
3-1	+359	1471	1471 DeBacco, Stephen
3-1	+102	1724	1726 Stock, Daniel
3-1	+24	1649	1651 Zeigler, Pete



Samuel Moch, Stefan Rau, Sinna Vijayakumar

### Moorestown, NJ: April 7

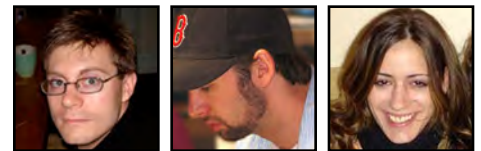
(4 PLAYERS)			
11-4	+649	1488	1553 Moch, Samuel (NY)
9-6	-199	1507	1525 Barrett, Ted
6-9	+60	1465	1435 Kapernaros, Michael (CT)

### Hudson, NY: April 7

(8 PLAYERS)			
8-0	+928	1889	1921 Rau, Stefan
6-2	+632	1782	1796 Highbly, Karl
4-4	+138	1664	1654 Rau, Terry Kang

### Guelph, ON: April 8

(7 PLAYERS)			
7-0	+418	1710	1753 Vijayakumar, Sinna
6-1	+674	1805	1812 Cauthier-Shalom, Gabriel (QC)
4-3	+410	1579	1568 McCall, Heather



Chris Lipe, Evans Clinchy, Alyssa Faria

### Boston, MA CSW: April 13

(6 PLAYERS)			
4-1	+179	1840	1860 Lipe, Chris (NY)
4-1	-17	1740	1781 Buck, Richard
3-2	+288	1951	1945 Koenig, David (MD)

### Boston, MA: April 13

(24 PLAYERS)			
5-0	+746	1842	1872 Clinchy, Evans
4-1	+352	1907	1915 Keller, Jason (NJ)
4-1	+328	1897	1908 Robinsky, Rob (MN)

### Boston, MA: April 13-15

DIVISION A (20 PLAYERS)			
11-3	+512	1723	1840 Faria, Alyssa
10-5	+515	1872	1898 Clinchy, Evans
10-5	+145	1823	1859 Lipkin, Seth
DIVISION B (36 PLAYERS)			
11-4	+898	1675	1713 Horn, Joel
11-4	+727	1574	1641 Fidler, Mark
11-4	+336	1676	1713 Barron, Mic (NH)
DIVISION C (36 PLAYERS)			
11-4	+664	1207	1277 Dlugosz, David (PA)
11-4	+574	1362	1419 Ghosh, Souparno
11-4	+228	1105	1221 Schmidt, Marilyn
DIVISION D (31 PLAYERS)			
12-3	+1181	1066	1127 Holmes, John (NH)
11-4	+575	980	1031 Zeff, Annette (VT)
11-4	+534	868	939 Barrieau, Eli
DIVISION P (16 PLAYERS)			
11-4	+692	1921	1982 Rau, Stefan (NY)
10-5	+570	1953	1992 Daniel, Robin Pollock (ON)
10-5	+535	1932	1975 Sherman, Joel (NY)

MORE APRIL continued on p. 9



## More April Results

from APRIL RESULTS, p. 8



David Koenig, Fran Silver, Eric Tran

### Boston, MA CSW: April 13-15

(12 PLAYERS)

13-2 +987 1945 2018 Koenig, David (MD)  
 9-6 +768 1995 1976 Wapnick, Joel (QC)  
 9-6 +455 1880 1886 Polatnick, Steve (FL)

### Boston, MA: April 14

(11 PLAYERS)

6-0 +399 0 1359 Mason, Christopher (NH)  
 4-2 +429 811 830 Weiner, Ruth  
 4-2 +390 666 753 Choslovsky, Marla

### Lubbock, TX: April 14-15

DIVISION A (12 PLAYERS)

10-3 +300 1604 1644 Silver, Fran  
 9-3 +379 1674 1685 Schultz, Wallace (NM)  
 8-4 +498 1740 1720 Early, Michael

DIVISION B (10 PLAYERS)

10-3 +539 1019 1045 Forrester, Randy (NM)  
 9-4 +559 763 832 Weston, Kay  
 8-5 +684 1022 1001 Brown, Vivian

### Edmonton, AB: April 14-15

DIVISION A (12 PLAYERS)

12-2 +1249 1928 1943 Tran, Eric  
 9-5 +323 1715 1713 MacAulay, George (SK)  
 9-5 +287 1383 1472 Panganiban, Danny

DIVISION B (12 PLAYERS)

11-3 +487 979 1099 Clifford, Maureen  
 9-5 -67 1064 1102 Lissack, Marcia  
 8-6 +387 1244 1222 Morris, Maureen

DIVISION C (10 PLAYERS)

11-3 +849 809 858 Klován, Dorothy  
 9-5 +522 757 770 Chai, Betsy  
 9-5 +381 682 713 Brookes, Laverne



Joel Sherman, Sam Dick-Onuoha, Eric Cahanin

### Norwalk, CT: April 21

DIVISION A (8 PLAYERS)

7-1 +359 1975 1995 Sherman, Joel (NY)  
 5-3 +189 1701 1727 Friedman, Andrew (NY)  
 4-4 +517 1862 1845 Meller, Mack (NY)

DIVISION B (8 PLAYERS)

7-1 +590 1572 1618 Brooks, Jim (WV)  
 6-2 +7 1553 1579 Moch, Samuel (NY)  
 5-3 -36 1401 1424 Kelly, Joan (NY)

DIVISION C (9 PLAYERS)

7-1 +926 1249 1271 Heinrich, Sam (MA)  
 6-2 +111 1084 1109 Lithgow, Jean (NY)  
 6-2 +55 1151 1161 Coleman, Judith Stein (NY)

### Dallas, TX: April 21

DIVISION A (4 PLAYERS)

4-2 +396 1617 1643 Dick-Onuoha, Sam  
 4-2 +99 1692 1709 Burlant, Jim  
 2-4 -151 1720 1693 Early, Michael

DIVISION B (4 PLAYERS)

4-2 +235 1208 1231 Villarreal, Linda  
 4-2 -120 1241 1260 Palazzo, Mad (ON)  
 2-4 +20 1303 1274 Sjostrom, Craig

DIVISION C (6 PLAYERS)

4-2 +338 860 868 Oppenlander, Patricia  
 4-2 +146 1020 1016 Owen, Phyllis  
 3-3 +12 616 634 Turner, Donald, II

### Baton Rouge, LA: April 21

DIVISION A (8 PLAYERS)

8-0 +865 1566 1654 Cahanin, Eric  
 5-3 +282 1453 1472 Millard, Leslie (TX)  
 4-4 -49 1485 1480 Crotty, Lila

DIVISION B (6 PLAYERS)

6-2 +161 1194 1227 Dimmick, Lindsey  
 5-3 +285 1172 1190 Bee, Margaret (TX)  
 4-4 -12 1031 1059 Jackson, Brett (FL)

DIVISION C (8 PLAYERS)

7-1 +401 861 919 Murphy, Joan (CA)  
 6-2 +661 855 886 Atchison, Carolyn  
 6-2 +529 689 751 Livers, Elaine



Joe South, Chris Lipe, Daniel Stock

### Cuyahoga Falls, OH: April 21-22

DIVISION A (12 PLAYERS)

9-4 +535 1595 1637 South, Joe  
 9-4 +473 1409 1513 Szymkowiak, Doug  
 9-4 +394 1663 1705 McKenzie, Kelly (KY)

DIVISION B (10 PLAYERS)

9-3 +578 1280 1318 Melvin, Cheryl (MI)  
 8-5 +468 1152 1185 Schroeder, M W (PA)  
 8-5 +270 1036 1094 Hardwick, Pat

DIVISION C (9 PLAYERS)

12-1 +1431 1005 1103 Brown, Lisa  
 9-4 -31 1039 1058 Zurbrick, Kristy  
 8-5 +174 1010 999 Miccio, Joe

### Cuyahoga Falls, OH CSW: April 21-22

(4 PLAYERS)

9-4 +485 1860 1898 Lipe, Chris (NY)  
 8-5 +321 1924 1932 Gabriel, Marty (IL)  
 8-5 +180 1914 1922 Bowman, Brian (KY)

### Cuyahoga Falls, OH: April 21

DIVISION A (4 PLAYERS)

4-0 +370 1721 1764 Stock, Daniel  
 2-2 +43 1686 1689 Alexander, Dorcas (PA)  
 1-3 -199 1346 1350 McCarthy, Kevin, Sr

DIVISION B (4 PLAYERS)

3-1 +205 1226 1238 Pitzer, Wilma  
 2-2 -63 1084 1089 Konicki, Walter  
 2-2 -134 1071 1078 Downey, Sharon (PA)

DIVISION C (4 PLAYERS)

3-1 +339 1045 1061 Bogle, Julia (IN)  
 2-2 +48 1103 1092 Brown, Lisa  
 2-2 -132 995 995 Graf, Greg



Joel Sherman, Rafi Stern, Jason Idalski

### Philadelphia, PA: April 22

DIVISION A (16 PLAYERS)

6-1 +703 1995 2004 Sherman, Joel (NY)  
 6-1 +649 1537 1625 Castellano, Vince (VA)  
 5-2 +430 1701 1725 Galebach, Brian (MD)

DIVISION B (16 PLAYERS)

7-0 +606 1277 1368 Dlugosz, David  
 5-2 +433 1344 1363 Cole, Judy (MA)  
 5-2 +281 1298 1320 Castellano, Joshua (VA)

DIVISION C (14 PLAYERS)

6-1 +609 958 1012 Vratsanos, Alex (DE)  
 6-1 +365 921 955 Brower, Ruth (DE)  
 6-1 +253 963 990 Horowitz, Dan (DE)

### San Diego, CA: April 27-29

(69 PLAYERS)

16-4 +1779 1918 1977 Stern, Rafi (WA)  
 15-5 +1150 1941 1975 Day, Jesse  
 15-5 +825 1886 1932 Cree, Chris (TX)

### Olive Hill, KY: April 28

DIVISION A (10 PLAYERS)

6-1 +620 1782 1781 Broering, Marc  
 6-1 +589 1563 1584 Bush, Steve  
 4-3 +190 1392 1380 Scott, Will

DIVISION B (10 PLAYERS)

6-1 +435 704 752 Bledsoe, Victoria  
 6-1 +381 829 852 Green, Lisa (WV)  
 6-1 +185 744 789 King, Betty

### South Lyon, MI: April 28

DIVISION A (10 PLAYERS)

6-2 +367 1865 1876 Idalski, Jason  
 6-2 +333 1670 1714 Knapp, Stephen  
 6-2 +167 1717 1750 Fiszbein, Jeff

DIVISION B (10 PLAYERS)

6-2 +441 1470 1493 Anstandig, Steve  
 6-2 +58 1468 1492 Stafford, Mike (OH)  
 5-3 +396 1318 1342 Melvin, Cheryl



Steve Glass, Geoff Thevenot, Jim Kramer

### Fort Lauderdale, FL: April 28

DIVISION A (6 PLAYERS)

6-2 +177 1904 1928 Glass, Steve  
 5-3 +296 1807 1827 Kahn, Robert  
 5-3 +75 1917 1917 Tiekert, Ron

DIVISION B (10 PLAYERS)

8-0 +593 1156 1289 Reed, Irving

*EVEN MORE OF continued on p. 10*

## Even More of April

from APRIL RESULTS, p. 9

6-2 +282	1300	1329	Guilbault, Brian (AB)
4-4 +96	1033	1053	Berkelhammer, Harriett
DIVISION C (10 PLAYERS)			
6-2 +447	859	895	Osbourne, Rex
6-2 +235	800	849	Berger, Fred
6-2 +73	925	948	Levin, Cheryl

### Berlin, NJ: April 28

DIVISION A (10 PLAYERS)			
6-1 +302	1508	1599	Berg, Mark (NY)
5-2 +359	1698	1715	Cook, Jeff (WV)
5-2 +263	1754	1767	Popper, Richard (DE)
DIVISION B (10 PLAYERS)			
6-1 +473	1372	1405	Spanfelner, Florence (PA)
5-2 +243	1201	1237	Ushry, Yolanda (GA)
5-2 +223	1421	1433	Castoro, Jane
DIVISION C (12 PLAYERS)			
6-1 +200	1035	1060	Buckley, Bernadette
5-2 +513	955	963	Brower, Ruth (DE)
5-2 +274	948	967	Buys, Julie

### Austin, TX: April 28

DIVISION A (8 PLAYERS)			
5-1 +560	1909	1912	Thevenot, Geoff
4-2 +41	1510	1550	Roeder, Oliver
3-3 +55	1542	1551	Leeds, Kevin
DIVISION B (6 PLAYERS)			
5-1 +411	996	1050	Gaudier, Deborah
4-2 +561	1087	1099	Rivard, Alexander
3-3 +41	1202	1187	Donegan, Michael

### Winnipeg, MB: April 28-29

DIVISION A (12 PLAYERS)			
10-4 +522	1304	1340	Charach, Richard
9-5 +855	1250	1281	Stone, Harold
9-5 +635	1489	1465	Kowalski, Curtis
DIVISION B (16 PLAYERS)			
12-2 +632	936	1006	Lallawooa, Dev
9-5 +482	840	875	Pearn, Linda
9-5 +404	876	903	Hamelin, Heather

### Sioux Falls, SD: April 28-29

DIVISION A (6 PLAYERS)			
10-2 +787	1967	2002	Kramer, Jim (MN)
8-4 +332	1839	1867	Odom, Lisa (MN)
7-5 +279	1753	1779	Gaspard, Joseph (MN)
DIVISION B (6 PLAYERS)			
10-2 +860	1412	1511	Daly, Aaron
8-3 +194	1504	1535	Asaka, George (NE)
5-6 -39	1328	1328	Bliss, Daniel Jay (MN)
DIVISION C (21 PLAYERS)			
11-1 +997	1092	1135	Leigh, Meredith (IA)
10-2 +766	841	1003	Koziol, Clay (NE)
10-2 +493	880	929	Troutman, Kirk (NE)

## May Monthly Leaders

by the Ratings and Recognition Committee

This section lists the players with the best results in May 2012.

### Most Rated Wins

1. 27 Cornelis, Lou (ON)
1. 27 Oliva, Linda (MD)
1. 27 Galebach, Brian (MD)

4. 26 Engelhardt, David (MD)
4. 26 Mahnken, Denise (SC)



Lou Cornelis, Cheryl Melvin

### Most Games Played

1. 51 Melvin, Cheryl (MI)
2. 48 Oliva, Linda (MD)
2. 48 Engelhardt, David (MD)
4. 46 Galebach, Brian (MD)
5. 45 Gable, Sue (NY)

### Most Games Undeclared

1. 14 Brookes, Laverne (AB)
2. 8 Imperato, Kyle (NY)
3. 6 Demeter, Jon (CA)
3. 6 Rohrmann, Charles, Jr (NY)

### Biggest Rating Gains

1. +227 = 1442 Karanofsky, Brian (QC)
2. +180 = 1328 Draper, Thomas (NJ)
3. +178 = 1881 Chicoine, Emanuel (QC)
4. +165 = 1145 Imperato, Kyle (NY)
5. +152 = 1721 Gottlin, Liz (NC)

### Highest Initial Rating

1. 1233 Elgart, Devin (OR)
2. 1118 Holmes, Vicki (WI)
3. 953 Carney, Mary (NY)
4. 861 Gouge, Lauren (DE)
5. 830 Bykowski, David (MD)

## May Results

by the Ratings and Recognition Committee

This section lists all players who finished in the top three places in their division in a rated tournament ending in May 2012, together with their wins, losses, cumulative spread, old and new ratings. Out-of-state winners are identified with their home state (or province).



Kolton Koehler, Chris Lipe, Jesse Day

### Portland, OR: May 4

(20 PLAYERS)			
4-1 +468	1475	1497	Koehler, Kolton
4-1 +441	970	1057	Creviston, Tyler (WA)
4-1 +421	1800	1796	Baker, Michael

### Portland, OR CSW: May 4

(6 PLAYERS)			
5-0 +417	1898	1935	Lipe, Chris (NY)
4-1 +239	1763	1800	Chaney, Travis
2-3 +34	1753	1745	Winter (TX)

### Portland, OR: May 4-6

DIVISION F (2 PLAYERS)			
2-2 +20	1991	1991	Day, Jesse (CA)

2-2 -20	1996	1996	Peltier, Nigel
DIVISION P (16 PLAYERS)			
4-0 +349	1709	1730	Baker, Michael
3-1 +160	1367	1394	Lackaff, Thomas (WA)
3-1 +50	1251	1269	Kearn, Robert (KY)



Dave Wiegand, Ryan Fischer, Tony Leah

### Portland, OR CSW: May 4-6

(10 PLAYERS)			
11-4 +906	2006	2019	Wiegand, Dave
11-4 +885	1841	1892	Clinchy, Evans (MA)
10-5 +59	1935	1955	Lipe, Chris (NY)

### Gatlinburg, TN: May 4-6

DIVISION A (8 PLAYERS)			
14-6 +824	1797	1838	Fischer, Ryan (NC)
13-7 +415	1710	1764	Scalzo, John (NY)
12-8 +996	1992	1953	Weinstein, Ian (FL)
DIVISION B (16 PLAYERS)			
15-5 +1223	1496	1548	Hopkins, Matt P (NC)
14-6 +1235	1563	1568	Dunlop, Glenn (ON)
14-6 +610	1476	1526	Seales, Cynthia (GA)
DIVISION C (14 PLAYERS)			
16-4 +2026	1147	1237	Mahnken, Denise (SC)
13-7 +1045	1154	1168	Ingram, Guy (GA)
12-8 +321	934	992	Herz, Manuel

### Strongsville, OH: May 5

(18 PLAYERS)			
6-1 +737	1604	1632	Kopczak, Josh
6-1 +386	1764	1777	Stock, Daniel
5-2 +341	1000	1054	Huber, Cecilia

### Bermuda Treasures Scrabble Cruise: May 6-13

DIVISION A (8 PLAYERS)			
15-3 +640	1821	1859	Leah, Tony (ON)
11-7 +376	1655	1672	Clark, Jeff (MI)
10-8 +285	1487	1517	Easter, Carolyn (MI)
DIVISION B (10 PLAYERS)			
15-3 +786	1315	1408	Cullman, Roger (ON)
11-7 +271	1315	1318	Wancel, Linda (NY)
10-8 -62	1143	1181	Brooks, Lee (TX)
DIVISION C (8 PLAYERS)			
12-6 +854	949	985	Finkelstein, Sandra (RI)
12-6 +208	945	977	Mei, Anne (ON)
11-7 +138	952	970	Jones, Carole (ON)
DIVISION D (5 PLAYERS)			
15-3 +1542	674	785	Logullo, Mary (TX)
13-5 +719	711	802	Holmquist, Pamela (MI)



Brian Galebach, Huguetta Settle, Joel Sherman

### Independence, OH LCT: May 8

(6 PLAYERS)

MORE MAY continued on p. 11

## More May Results

from MAY RESULTS, p. 10

3-1 +201 1089 1098 Brown, Lisa  
 3-1 +113 1777 1773 Stock, Daniel  
 2-2 -26 1169 1170 Sheppard, Christopher

### Baltimore (Catonsville), MD: May 12

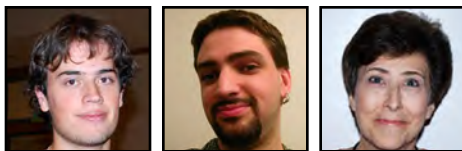
DIVISION A (8 PLAYERS)  
 7-1 +809 1700 1734 Galebach, Brian  
 5-3 +441 1747 1733 Davis, Tim  
 5-3 -119 1528 1548 Denton, Carole  
 DIVISION B (13 PLAYERS)  
 7-1 +617 1220 1244 Schlauch, Robin  
 6-2 +488 1237 1245 Mast, Ted  
 6-2 +245 961 1005 Harpp, Jacqueline

### Saskatoon, SK: May 12-13

DIVISION A (14 PLAYERS)  
 11-3 +672 1303 1362 Settle, Huguette (AB)  
 10-4 +235 1192 1261 Bray, Michael  
 9-5 +482 1409 1399 Latis, George (AB)  
 DIVISION B (14 PLAYERS)  
 11-3 +712 1063 1104 Drury, Wanda  
 9-5 +438 994 1015 Forrester, Don (MB)  
 9-5 +308 1004 1024 Gerwing, Jean  
 DIVISION C (12 PLAYERS)  
 14-0 +1466 713 863 Brookes, Laverne (AB)  
 11-3 +1278 719 770 Woodward, William R  
 10-4 +543 557 618 Potter, Pat (BC)

### Norwalk, CT: May 12

DIVISION A (10 PLAYERS)  
 6-2 +186 2004 2009 Sherman, Joel (NY)  
 5-3 +252 1807 1824 Whitmarsh, Bradley (MA)  
 5-3 +108 1579 1623 Moch, Samuel (NY)  
 DIVISION B (10 PLAYERS)  
 7-1 +403 1462 1532 Gable, Sue (NY)  
 6-2 +374 1563 1580 Randall, Brandon  
 5-3 +278 1122 1182 Wood, Betsey (MA)  
 DIVISION C (8 PLAYERS)  
 8-0 +1033 980 1145 Imperato, Kyle (NY)  
 6-2 +257 902 961 Imperato, Christopher (NY)  
 6-2 +164 1006 1034 Guo, DeeAnn (NY)



Jesse Day, Stefan Rau, Marla Riff

### Berkeley, CA: May 13

DIVISION A (7 PLAYERS)  
 6-1 +532 1991 2006 Day, Jesse  
 6-1 +390 1858 1888 Frentz, Mike  
 5-2 +225 1779 1804 Berahovich, Leesa  
 DIVISION B (8 PLAYERS)  
 5-1 +164 1634 1659 Apindi, Isaac  
 4-2 +329 1490 1507 Stevens, Mary Aline  
 4-2 +309 1486 1509 Whitman, Alan  
 DIVISION C (8 PLAYERS)  
 6-0 +281 1334 1381 Demeter, Jon  
 5-1 +518 1136 1180 Smith, Peter  
 4-2 +119 963 1007 Mocine, Joan

### Utica (Whitesboro), NY: May 19

DIVISION A (8 PLAYERS)  
 8-0 +460 1982 2003 Rau, Stefan  
 5-3 +421 1600 1613 Rau, Terry Kang  
 5-3 +242 1578 1595 Ubeika, Jason (ON)  
 DIVISION B (15 PLAYERS)  
 7-1 +460 1181 1232 Wittman, Dianne  
 7-1 +426 1067 1152 Bowman, Joseph (ON)  
 5-3 +344 1289 1284 Scaglione, Ida

### Fort Lauderdale, FL: May 19

DIVISION A (8 PLAYERS)  
 6-2 +257 1233 1273 Riff, Marla  
 5-3 +301 1289 1302 Reed, Irving  
 5-3 +167 1282 1294 Heartberg, Mervet (NY)  
 DIVISION B (6 PLAYERS)  
 6-2 +480 1051 1075 Feigin, Pat  
 6-2 +220 944 981 Buie, Ashley  
 4-4 -13 844 853 Souza, Marilena



Darrell Day, Marc Carnegie, Matt Canik

### Dallas, TX: May 19

DIVISION A (6 PLAYERS)  
 5-1 +533 1855 1881 Day, Darrell  
 5-1 +115 1643 1715 Dick-Onuoha, Sam  
 4-2 +46 1932 1934 Cree, Chris  
 DIVISION B (6 PLAYERS)  
 4-2 +382 1231 1256 Villarreal, Linda  
 3-3 +166 1187 1194 Donegan, Michael  
 3-3 +54 1408 1391 Hagelstein, Paul  
 DIVISION C (6 PLAYERS)  
 5-1 +209 1016 1036 Owen, Phyllis  
 4-2 +262 826 864 Osondu, Ejike (GA)  
 3-3 +174 895 885 Hidalgo, Regenia

### Bayside Queens, NY: May 19

DIVISION A (8 PLAYERS)  
 8-1 +560 1539 1656 Carnegie, Marc  
 6-3 +313 1556 1596 Berg, Verna Richards  
 6-3 +311 1649 1672 Hall, Jeremy  
 DIVISION B (10 PLAYERS)  
 8-1 +705 1148 1328 Draper, Thomas (NJ)  
 6-3 +27 1152 1190 Nussbaum, Phyllis  
 5-4 +387 1318 1310 Wancel, Linda  
 DIVISION C (8 PLAYERS)  
 6-3 +608 979 998 Draper, Tom (NJ)  
 6-3 +32 1009 1016 Matsoukas, Niki  
 5-4 +194 959 953 Nahaczewski, Pat

### Austin, TX: May 19

(8 PLAYERS)  
 5-1 +398 1798 1812 Canik, Matt  
 4-2 +191 1551 1565 Leeds, Kevin  
 4-2 -185 1099 1184 Rivard, Alexander

### Romulus, MI: May 19-20

(16 PLAYERS)  
 12-2 +1645 1929 1954 Berofsky, Evan (ON)  
 10-4 +207 1724 1793 Cornelis, Lou (ON)  
 9-5 +988 1888 1895 Epstein, Paul



Evan Berofsky, Victor Tantua, Aldo Cardia

### Laguna Woods, CA: May 19-20

(12 PLAYERS)  
 10-3 +1127 1462 1523 Tantua, Victor  
 9-4 +579 1847 1829 Knapp, Rachel  
 9-4 +320 1838 1823 Rickhoff, Kevin

### Wilmington, DE: May 20

DIVISION A (8 PLAYERS)  
 5-3 +503 1691 1710 Cardia, Aldo (NY)  
 5-3 +213 1774 1782 Cardia, Jan  
 4-4 +260 1727 1721 Olinger, Steve (PA)  
 DIVISION B (8 PLAYERS)  
 7-1 +634 1494 1564 Barrett, Ted (NJ)  
 5-3 +207 1405 1436 Spanfelner, Florence (PA)  
 5-3 +67 1519 1532 Creed, Connie (PA)  
 DIVISION C (8 PLAYERS)  
 5-2 +165 1320 1351 Castellano, Joshua (VA)  
 5-3 +168 1365 1379 Fine, Adam (MD)  
 4-3 +131 1279 1295 Oliva, Linda (MD)  
 DIVISION D (8 PLAYERS)  
 6-2 +202 1112 1150 Hanley, Nancy  
 5-3 +79 1220 1221 Stewart, Gwen (MD)  
 5-3 +2 1036 1063 Filandro, Peter  
 DIVISION E (10 PLAYERS)  
 6-2 +525 979 1000 Stewart, Mary (MD)  
 5-3 +302 907 916 Tillson, Carol (MD)  
 5-3 +171 950 957 Filandro, Marie



Brian Galebach, Joel Sherman, Cecilia Le

### Tarrytown, NY: May 25

DIVISION A (6 PLAYERS)  
 5-1 +296 1728 1760 Galebach, Brian (MD)  
 4-2 +248 1767 1773 Friedman, Andrew  
 4-2 +144 1613 1638 Rau, Terry Kang  
 DIVISION B (6 PLAYERS)  
 6-0 +479 1445 1496 Rohrmann, Charles, Jr  
 3-3 +178 1319 1311 Resnick, Marshall (NJ)  
 3-3 -59 1135 1149 Borenstein, Roberta (CT)

### Tarrytown, NY: May 25-28

DIVISION A (20 PLAYERS)  
 17-3 +1850 2009 2034 Sherman, Joel  
 15-5 +428 1823 1872 Schoenbrun, Ben  
 14-6 +799 1919 1929 Anderson, Will  
 DIVISION B (26 PLAYERS)  
 16-4 +796 1409 1480 Cole, Judy (MA)  
 14-6 +688 1479 1488 Schoneboom, Marjorie  
 14-6 +619 1429 1462 O'Connor, Matthew

### Cote St. Luc, QC: May 26-27

DIVISION A (18 PLAYERS)  
 10-4 +975 1845 1871 Le, Cecilia (MA)

EVEN MORE OF continued on p. 12

## Even More of May

from *MAY RESULTS*, p. 11

9-5 +744 1859 1870 Lipkin, Seth (MA)

9-5 +298 1718 1761 Horn, Joel (MA)

DIVISION B (20 PLAYERS)

11-3 +628 1420 1484 Rackham, Anita

11-3 +584 1215 1442 Karanofsky, Brian

10-4 +937 1391 1437 Barclay, Wayne (ON)

DIVISION C (10 PLAYERS)

10-4 +473 940 972 Thompson, Gavin (ON)

9-5 +651 775 829 Apissoghomian, John

9-5 +575 967 975 Niesink, Patrick (ON)



Adam Logan, Lisa Odom, David Gibson

### Cote St. Luc, QC CSW: May 26-27

(12 PLAYERS)

9-5 +589 2121 2121 Logan, Adam (ON)

9-5 +374 1703 1881 Chicoine, Emanuel

9-5 +154 1870 1917 Rosin, Sam (NJ)

### Elmhurst, IL: May 26-28

DIVISION A (22 PLAYERS)

15-5 +985 1867 1930 Odom, Lisa (MN)

13-7 +775 1757 1845 Gabriel, Marty

13-7 +517 1951 1957 Jackson, Scott (MN)

DIVISION B (12 PLAYERS)

17-3 +979 1793 1842 Cornelis, Lou (ON)

13-7 +1080 1679 1702 Garner, Scott (TN)

13-7 +507 1508 1586 Marcus, Marty

DIVISION C (16 PLAYERS)

16-4 +1570 1488 1563 Lundquist, Doug

15-5 +787 1455 1529 Finn, Lynda (WI)

13-7 +854 1472 1498 Roland, Tobey (MD)

DIVISION D (14 PLAYERS)

17-3 +1004 1142 1249 Rathberger, Don

13-7 +606 1192 1204 Hoehn, Susan (MN)

13-7 +409 1130 1161 OLaughlin, Tom (WI)

DIVISION E (25 PLAYERS)

16-4 +1956 829 980 Sittler, Penny (IN)

15-5 +776 786 886 Konkol, Janice (WI)

13-7 +931 979 967 Fischer, Dave

### College Park, GA: May 26-28

DIVISION A (10 PLAYERS)

16-4 +1495 2073 2081 Gibson, David (SC)

15-5 +463 1569 1721 Gottlin, Liz (NC)

14-5 +761 1945 1955 Luebkekmann, John

DIVISION B (32 PLAYERS)

15-5 +1199 1287 1399 Bassett, Michael

15-5 +930 1584 1574 Bush, Steve (KY)

14-6 +512 1236 1324 Shuman, Bruce (NC)

DIVISION C (19 PLAYERS)

17-3 +1098 1096 1158 Simpson, Christopher

14-6 +1153 957 999 Gardner, Andrew

13-7 +545 797 867 Scruggs, Julia

### Guelph, ON: May 27

DIVISION A (6 PLAYERS)

5-1 +533 1658 1684 Newman, Geoffrey

4-2 +361 1502 1532 Abbasi, Shan

4-2 -78 1518 1539 Ozorio, Steve

DIVISION B (8 PLAYERS)

5-1 +157 838 940 Sawatzky, Peter

4-2 +772 1156 1167 Schlegel, Matt

4-2 +229 1153 1164 Petrie, Shauna



Will Anderson

### Tarrytown, NY: May 28

DIVISION A (6 PLAYERS)

4-0 +249 1929 1959 Anderson, Will

3-1 +246 1637 1675 Rau, Terry Kang

2-2 +282 1983 1971 Rau, Stefan

DIVISION B (4 PLAYERS)

3-1 +104 1311 1325 Resnick, Marshall (NJ)

2-2 +84 1311 1305 Wancel, Linda

2-2 -37 1149 1151 Borenstein, Roberta (CT)

## June Monthly Leaders

by the Ratings and Recognition Committee

This section lists the players with the best results in June 2012.



Brian Galebach

### Most Rated Wins

1. 37 Galebach, Brian (MD)
2. 31 Lipe, Chris (NY)
3. 29 Keller, Jason (NJ)
4. 27 Wancel, Linda (NY)
4. 27 Roberdeau, Joe (OH)

### Most Games Played

1. 71 Galebach, Brian (MD)
2. 68 Wancel, Linda (NY)
3. 51 Lipe, Chris (NY)
4. 49 Keller, Jason (NJ)
5. 45 Lizin, Katya (NC)

### Most Games Undeclared

1. 9 Salgado, Erik (NC)
2. 7 Underwood, Wesley (IL)
2. 7 Jones, Florida (IL)
4. 6 Mulvihill, Della (CA)
4. 6 Villarreal, Linda (TX)
4. 6 Smith, Peter (CA)
4. 6 Catanese, Paula (CA)
4. 6 Machi, Michael (CA)

### Biggest Rating Gains

1. +208 = 756 Smith, Jenny (PA)
2. +184 = 1655 Zeigler, Pete (OH)
3. +181 = 1106 Mojica, Avery (KS)
4. +167 = 639 Schafer, Gerald (PA)
5. +143 = 1271 Machi, Michael (CA)

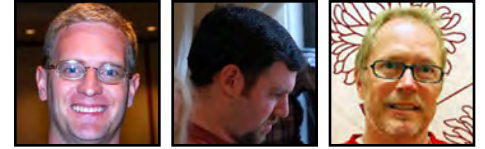
### Highest Initial Rating

1. 1425 Ali, Asif (OK)
2. 1304 Dean, Dustin (VA)
3. 1124 Nance, Rebecca (OK)
4. 1012 Eggertson, Curran (AB)
5. 920 Weiss, Tim (NJ)

## June Results

by the Ratings and Recognition Committee

This section lists all players who finished in the top three places in their division in a rated tournament ending in June 2012, together with their wins, losses, cumulative spread, old and new ratings. Out-of-state winners are identified with their home state (or province).



Scott Garner, Jason Keller, Randall Thomas

### Brandon, MS: June 1

DIVISION A (4 PLAYERS)

3-1 +278 1702 1707 Garner, Scott (TN)

2-2 -57 1480 1480 Crotty, Lila (LA)

2-2 -141 1471 1477 Waugh, Mike (LA)

DIVISION B (4 PLAYERS)

3-1 +157 1326 1349 Gatlin, Danny

2-2 +63 1374 1371 Camper, Jacqueline (TN)

2-2 -80 1275 1280 Ganguet, Richard (AL)

DIVISION C (4 PLAYERS)

3-1 +129 899 951 Dunavin, Callie (AR)

2-2 +15 1120 1121 Flowers, Josephine (AR)

2-2 -135 1159 1153 Altazan, Peggy (LA)

DIVISION D (6 PLAYERS)

4-0 +251 895 946 Stutzman, Erica

3-1 +126 751 764 Livers, Elaine (LA)

3-1 +52 539 578 Hebert, Chandra (LA)

### Brandon, MS: June 2

DIVISION A (8 PLAYERS)

6-2 +447 1707 1710 Garner, Scott (TN)

5-3 +310 1477 1494 Waugh, Mike (LA)

5-3 +187 1371 1399 Camper, Jacqueline (TN)

DIVISION B (8 PLAYERS)

6-2 +398 1169 1204 Patrick, Ruth

6-2 +90 1135 1176 Kenny, Noreen

5-3 +134 1121 1144 Flowers, Josephine (AR)

DIVISION C (8 PLAYERS)

6-2 +507 857 874 Lewis, Queen Ester

5-3 +272 802 807 Trotman, Jean (AR)

5-3 +203 764 769 Livers, Elaine (LA)

### Coraopolis (Pittsburgh), PA: June 2-3

DIVISION A (8 PLAYERS)

10-3 +889 1869 1896 Keller, Jason (NJ)

9-4 +254 1766 1820 Yowonske, Mike

7-6 +233 1728 1723 Galebach, Brian (MD)

DIVISION B (18 PLAYERS)

10-3 +578 1235 1284 Smith, Karen

9-4 +169 1299 1314 Melvin, Cheryl (MI)

8-5 +631 1393 1372 Perman, Gary

DIVISION C (21 PLAYERS)

11-2 +353 548 756 Smith, Jenny

9-4 +682 873 901 Larson, Joe

8-5 +381 891 910 Incorvati, Tony (OH)

### Calgary, AB: June 2-3

DIVISION A (14 PLAYERS)

*MORE JUNE continued on p. 13*

## More June Results

from JUNE RESULTS, p. 12

11-3 +673 1576 1625 Thomas, Randall  
 10-4 +466 1713 1713 MacAulay, George (SK)  
 9-5 +598 1587 1594 Pivovarov, Juraj  
**DIVISION B (11 PLAYERS)**  
 12-2 +634 1137 1174 Settle, Ben  
 10-4 +703 954 993 Millington, Troy  
 10-4 +264 863 921 Brookes, Laverne



David Koenig, Maddy Kamen, Joel Sherman

### Coraoopolis (Pittsburgh), PA CSW: June 2-3

(4 PLAYERS)  
 8-5 +1142 2018 2012 Koenig, David (MD)  
 8-5 +346 1977 1974 Lipe, Chris (NY)  
 8-5 +90 1922 1935 Bowman, Brian (KY)

### Laguna Woods, CA: June 3

(7 PLAYERS)  
 8-0 +810 1790 1837 Kamen, Maddy  
 6-2 +883 1829 1833 Knapp, Rachel  
 5-3 +113 1525 1527 Moss, Gary

### Philadelphia, PA: June 3

**DIVISION A (12 PLAYERS)**  
 6-1 +540 2034 2037 Sherman, Joel (NY)  
 5-2 +302 1519 1561 Berg, Verna Richards (NY)  
 4-3 +265 1755 1748 Winter (TX)  
**DIVISION B (12 PLAYERS)**  
 7-0 +651 1363 1454 Jacobson, Jeffrey  
 6-1 +312 1291 1350 Roth, Edwin  
 5-2 +187 1368 1392 Dlugosz, David  
**DIVISION C (12 PLAYERS)**  
 6-1 +273 916 954 Gannon, Jeanne (NJ)  
 6-1 +140 916 959 Tillson, Carol (MD)  
 5-2 +272 943 958 Horowitz, Dan (DE)



Lester Schonbrun, Brian Galebach, Stephen DeBacco

### Berkeley, CA: June 3

**DIVISION A (7 PLAYERS)**  
 6-1 +290 1775 1833 Schonbrun, Lester  
 4-3 +281 1967 1958 Lerman, Jerry  
 4-3 +47 1888 1886 Frenz, Mike  
**DIVISION B (6 PLAYERS)**  
 5-1 +338 1686 1714 Ward, Bruce  
 4-2 +287 1659 1670 Apindi, Isaac  
 4-2 +157 1507 1532 Stevens, Mary Aline  
**DIVISION C (6 PLAYERS)**  
 6-0 +375 1368 1456 Catanese, Paula  
 3-3 +365 1373 1373 Miller, Carole  
 3-3 -39 1381 1381 Demeter, Jon  
**DIVISION D (6 PLAYERS)**  
 6-0 +555 1180 1220 Smith, Peter  
 4-2 +168 745 805 Parry, Sandy

3-2 +41 1005 1011 Scott, S E

### Hancock, MA: June 7

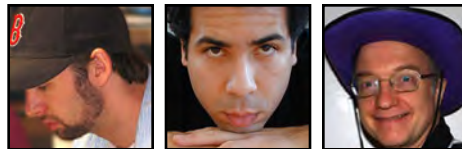
(4 PLAYERS)  
 6-2 +917 1723 1735 Galebach, Brian (MD)  
 4-4 +248 1675 1660 Rau, Terry Kang (NY)  
 4-4 -176 1623 1608 Moch, Samuel (NY)

### Akron, OH LCT: June 7

(7 PLAYERS)  
 3-1 +262 1486 1494 DeBacco, Stephen  
 3-1 +127 1098 1102 Brown, Lisa  
 3-1 +92 1638 1637 Zeigler, Pete

### Hancock, MA: June 8

**DIVISION A (4 PLAYERS)**  
 4-2 +327 1660 1702 Rau, Terry Kang (NY)  
 3-3 +58 1870 1863 Rosin, Sam (NJ)  
 3-3 +58 1896 1886 Keller, Jason (NJ)  
**DIVISION B (4 PLAYERS)**  
 5-1 -10 1111 1186 Hatch, Andrea (CO)  
 4-2 +452 1608 1591 Moch, Samuel (NY)  
 2-4 -62 1274 1251 Wancel, Linda (NY)



Evans Clinchy, Winter, Daniel Stock

### Hancock, MA: June 8-10

**DIVISION A (12 PLAYERS)**  
 15-1 +1439 1898 2006 Clinchy, Evans  
 11-5 +670 1863 1902 Rosin, Sam (NJ)  
 9-7 +42 1971 1954 Rau, Stefan (NY)  
**DIVISION B (12 PLAYERS)**  
 10-6 +570 1617 1624 Liebfried, Ed (VT)  
 10-6 +428 1580 1593 Randall, Brandon (CT)  
 10-6 +407 1517 1546 Gable, Sue (NY)  
**DIVISION C (10 PLAYERS)**  
 12-4 +326 1125 1202 Yorra, Wayne  
 10-5 +216 1117 1172 Fiorelli, Doreen (NY)  
 9-7 +401 1249 1227 Rothbart, Sam (NY)

### Tucson, AZ: June 9

**DIVISION A (6 PLAYERS)**  
 6-2 +582 1748 1762 Winter (TX)  
 5-3 +497 1524 1552 Carlson, Travis  
 4-4 +21 1356 1377 Saul, Lewis  
**DIVISION B (4 PLAYERS)**  
 6-2 +519 1032 1066 Readle, Robert  
 4-4 +228 870 879 Spence, Phyllis  
 4-4 +5 1136 1112 Brown, Steven

### Hudson, OH: June 9

(10 PLAYERS)  
 6-1 +392 1762 1780 Stock, Daniel  
 4-2 -96 1015 1064 Stock, Joyce  
 4-3 +444 1632 1621 Kopczak, Josh

### Charlotte, NC: June 9

**DIVISION A (10 PLAYERS)**  
 8-1 +884 1780 1815 Bernardina, Matthew  
 6-3 +506 1714 1721 Harris, Chad (SC)  
 6-3 +304 1813 1809 Hersom, Randy

### DIVISION B (12 PLAYERS)

9-0 +1246 1088 1141 Salgado, Erik  
 7-2 +1104 1105 1114 Cohen, Jacob  
 6-3 +163 930 944 Zhuang, Edward



Matthew Bernardina, Matthew Hodge, Chris Cree

### Kansas City, MO: June 9-10

**DIVISION A (10 PLAYERS)**  
 12-1 +1427 1836 1861 Hodge, Matthew (OK)  
 9-4 +401 1506 1540 Mulik, Paul  
 7-6 +42 925 1012 Mojica, Avery (KS)  
**DIVISION B (10 PLAYERS)**  
 11-2 +905 1020 1043 Arnold, Michael  
 9-4 +323 593 672 Herring, Karon  
 8-5 +398 786 790 Komer, Joe (KS)

### Corrales, NM: June 9-10

(24 PLAYERS)  
 13-5 +1060 1934 1962 Cree, Chris (TX)  
 12-6 +875 1958 1956 Lerman, Jerry (CA)  
 12-6 +690 1776 1820 Thelen, Michael (UT)

### Covina, CA: June 10

**DIVISION A (12 PLAYERS)**  
 6-1 +528 1762 1825 Winter (TX)  
 5-2 +493 1809 1832 Pearl, David  
 5-2 +119 1810 1831 Payne, Trip  
**DIVISION B (12 PLAYERS)**  
 6-1 +62 1303 1416 Strick, Richard  
 5-1 +400 1621 1645 Loritz, Yukiko  
 4-3 +454 1523 1530 Tantua, Victor  
**DIVISION C (12 PLAYERS)**  
 6-1 +476 1033 1133 Heller, Jacqueline  
 5-2 +198 1195 1223 Kait, Alan  
 5-2 +171 1064 1115 Postal, David  
**DIVISION D (12 PLAYERS)**  
 5-2 +296 880 914 Kerner, Diane  
 5-2 +270 860 920 Aghedoh, Bruno  
 5-2 +203 856 933 Burch, Jem

### Arcata, CA: June 10

**DIVISION A (4 PLAYERS)**  
 6-0 +432 1128 1271 Machi, Michael  
 4-2 +318 1640 1635 Henderson, James  
 2-4 +63 1402 1383 Kruley, Leah  
**DIVISION B (6 PLAYERS)**  
 6-0 +444 1079 1122 Mulvihill, Della  
 4-2 +238 911 924 Mason, Alan  
 4-2 +67 875 896 Burrirt, Gladys

### Charlotte, NC: June 10

(16 PLAYERS)  
 7-1 +860 1745 1779 Fischer, Ryan  
 6-2 +234 1815 1820 Bernardina, Matthew  
 5-2 +567 1275 1292 Price, John

### Mississauga, ON: June 16

**DIVISION A (14 PLAYERS)**  
 7-1 +585 1684 1761 Newman, Geoffrey

*EVEN MORE OF continued on p. 14*

## Even More of June

from JUNE RESULTS, p. 13

6-2 +491 1753 1783 Vijayakumar, Sinna  
6-2 +194 1521 1583 McCall, Heather

### DIVISION B (14 PLAYERS)

7-1 +367 1406 1459 Sealy, Trevor  
5-3 +291 1428 1433 Fernando, Priya  
5-3 +262 1366 1381 Cullman, Roger

### DIVISION C (14 PLAYERS)

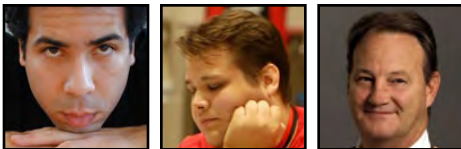
7-1 +532 1167 1235 Schlegel, Matt  
5-3 +293 1183 1197 Turner, Kevin  
5-3 +54 1171 1186 Aitken, Terry

### DIVISION D (14 PLAYERS)

7-1 +385 829 934 Apissoghonian, John (QC)  
7-1 +130 942 1014 Sinclair, Don  
6-2 +463 944 982 Spivak, Elizabeth

### DIVISION E (9 PLAYERS)

6-2 +613 0 903 Frost, Troy  
6-2 +372 682 720 Dunlop, Merran  
6-2 +322 771 786 Janssen, Sharon



Winter, Ryan Fischer, Chris Cree

### Edmonton, AB: June 16

#### DIVISION A (6 PLAYERS)

6-0 +582 1481 1547 Yocom, Wesley  
4-2 +361 1594 1589 Pivovarov, Juraj  
4-2 -228 1399 1418 Latis, George

#### DIVISION B (6 PLAYERS)

5-1 +206 550 622 Bates, Debra  
5-1 +57 741 793 Bird, Roy  
3-3 -37 742 730 Young, Dorothy

### Dallas, TX: June 16

#### DIVISION A (4 PLAYERS)

6-0 +478 1962 1999 Cree, Chris  
3-3 +108 1900 1892 Day, Darrell  
3-3 -129 1678 1695 Burlant, Jim

#### DIVISION B (4 PLAYERS)

6-0 +679 1256 1323 Villarreal, Linda  
3-3 +29 1181 1181 Brooks, Lee  
2-4 -96 1183 1163 Sanchez, Pat

#### DIVISION C (6 PLAYERS)

4-2 +275 954 953 Bratcher, Nancy  
4-2 +255 862 870 Oppenlander, Patricia  
4-2 +66 616 693 Hildenbrand, Barbara



Evans Clinchy, David Gibson, Ted Barrett

### Hudson, NY CSW: June 16

#### (12 PLAYERS)

7-1 +1018 1917 1945 Clinchy, Evans (MA)  
6-2 +240 1775 1807 Buck, Richard (MA)  
5-3 +442 1785 1781 Keller, Jason (NJ)

### Knoxville, TN: June 16-17

#### DIVISION A (12 PLAYERS)

12-3 +729 2081 2077 Gibson, David (SC)  
10-4 +1152 1779 1802 Fischer, Ryan (NC)  
10-5 +57 1526 1598 Seales, Cynthia (GA)

#### DIVISION B (18 PLAYERS)

11-4 +456 1281 1334 Lezin, Katya (NC)  
10-4 +619 1380 1405 Scott, Will (KY)  
10-5 +391 1217 1266 Bergeron, Jerri (GA)

#### DIVISION C (18 PLAYERS)

12-3 +389 958 1018 Michaels, Thomas  
12-3 +302 850 947 Roberdeau, Joe (OH)  
11-4 +793 999 1034 Gardner, Andrew (GA)

### Mt Laurel, NJ: June 17

#### (6 PLAYERS)

13-3 +982 1564 1604 Barrett, Ted  
10-6 +590 1454 1465 Jacobson, Jeffrey (PA)  
8-8 +401 1435 1405 Kapernaros, Michael (CT)



Steve Ozorio, Darrell Day, Ron Tiekert

### Guelph, ON: June 17

#### (10 PLAYERS)

6-0 +625 1525 1587 Ozorio, Steve  
5-1 +588 1596 1615 Ubeika, Jason  
4-2 +285 1783 1764 Vijayakumar, Sinna

### Oklahoma City, OK: June 23

#### DIVISION A (6 PLAYERS)

5-1 +436 1892 1903 Day, Darrell (TX)  
3-3 +52 1755 1744 Purinton, Jeffrey  
3-3 +4 1656 1652 Early, Michael (TX)

#### DIVISION B (6 PLAYERS)

5-1 +220 1203 1267 Rhoades, Mary (TX)  
4-2 +241 0 1425 Ali, Asif  
3-3 +176 1246 1247 Jonsson, Ellen

#### DIVISION C (10 PLAYERS)

5-1 +163 1056 1087 Solomon, Carl  
4-2 +370 0 1124 Nance, Rebecca  
4-2 +317 1014 1022 Owen, Phyllis (TX)

### Fort Lauderdale, FL: June 23

#### DIVISION A (6 PLAYERS)

6-2 +367 1917 1941 Tiekert, Ron  
5-3 +424 1953 1958 Weinstein, Ian  
4-4 +109 1854 1853 Polatnick, Steve

#### DIVISION B (6 PLAYERS)

6-2 +189 1490 1502 Gradus, Larry  
5-3 +8 1135 1177 Marques, Sophie  
4-4 +0 1336 1327 Wood, Thomas E

#### DIVISION C (8 PLAYERS)

6-2 +246 943 970 Weithers, Merlene  
5-3 +494 995 995 Berkelhammer, Harriett  
5-3 -6 660 701 Pugh, Jean



Erickson Smith, Jeremy Hall, Chris Lipe

### Cary, NC: June 23

#### DIVISION A (8 PLAYERS)

7-1 +812 1521 1585 Smith, Erickson  
6-2 +270 1512 1547 Anum, Francis (VA)  
5-3 +189 1668 1665 McKeown, Rahn

#### DIVISION B (8 PLAYERS)

6-2 +148 1249 1279 Taylor, Flora  
4-3 -159 1214 1220 Griffith, Robb  
4-4 +227 1214 1210 Pomeroy, Marilyn

#### DIVISION C (10 PLAYERS)

6-2 +481 863 894 Iyengar, Amalan  
5-3 +116 0 814 Diehl, Elisa  
5-3 +98 517 585 Grinnell, Mary

### Bayside Queens, NY: June 23

#### DIVISION A (8 PLAYERS)

8-1 +1115 1672 1707 Hall, Jeremy  
6-3 +85 1621 1623 Tier, Steve  
5-4 +370 1494 1500 Schoneboom, Marjorie

#### DIVISION B (12 PLAYERS)

8-1 +552 1145 1194 Fonti, Jim  
7-2 +592 1162 1184 White, Charlene (NJ)  
7-2 +443 1184 1213 Levine, Carol

### Washington, DC: June 23

#### (5 PLAYERS)

6-0 +890 663 768 Radack, Jacob  
4-2 +76 0 695 Torgovitsky, Bryson  
3-3 +82 0 500 D'Arcangelo, Michael (VA)

### Washington, DC: June 23-24

#### (6 PLAYERS)

10-4 +635 1950 1961 Lipe, Chris (NY)  
8-6 +408 1675 1756 Van Pelt, John (VA)  
8-6 +96 1762 1790 Freeman, Lucas (VA)



Jason Idalski, Jason Bednarz, Marlon Hill

### Michigan Madness - Romulus, MI: June 23-24

#### DIVISION A (20 PLAYERS)

12-2 +990 1876 1923 Idalski, Jason  
11-3 +624 1917 1935 Epstein, Paul  
9-5 +369 1477 1538 Steffy, Heather (GA)

#### DIVISION B (14 PLAYERS)

9-5 +428 1430 1427 Glowniak, Elaine  
9-5 +387 1381 1388 Van Tol, Hubert (NY)  
9-5 +226 1335 1354 Blanchard, Susan (NC)

#### DIVISION C (12 PLAYERS)

13-1 +1350 1012 1106 Mojica, Avery (KS)  
11-3 +893 983 1035 Henney, Stephen  
9-5 +350 947 962 Roberdeau, Joe (OH)

### Washington, DC: June 23-24

#### DIVISION A (10 PLAYERS)

12-2 +924 1901 1920 Bednarz, Jason (MD)  
10-4 +647 1722 1754 Galebach, Brian (MD)  
8-5 +242 1559 1572 Fatsis, Stefan

#### DIVISION B (16 PLAYERS)

10-4 +721 1221 1264 Stewart, Gwen (MD)  
10-4 +365 1319 1335 Chen, Woody (NY)

STILL JUNE continued on p. 15

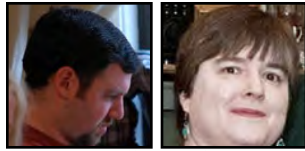
## Still More June Results

from *STILL RESULTS*, p. 14

9-5 +432	1245	1262	Mast, Ted (MD)
DIVISION C (17 PLAYERS)			
12-2 +858	0	1304	Dean, Dustin (VA)
10-4 +956	865	941	Kwan, Tim (VA)
10-4 +418	751	839	Rupert, Matthew (PA)

### Albany, NY: June 28

DIVISION A (12 PLAYERS)			
7-1 +842	1836	1856	Hill, Marlon (MD)
6-1 +546	1709	1736	Heidler, Greg (HI)
5-3 +25	1710	1705	Garner, Scott (TN)
DIVISION B (14 PLAYERS)			
7-1 +720	1226	1258	Lieberman, Noah (NC)
6-2 +254	1038	1091	Kamath, Shubha
6-2 +220	1209	1238	Wancel, Linda



Jason Keller, Becky Dyer

### Albany, NY: June 29

DIVISION A (6 PLAYERS)			
5-1 +562	1835	1863	Keller, Jason (NJ)
4-2 +110	1796	1814	Higby, Karl
4-2 -68	1736	1764	Heidler, Greg (HI)
DIVISION B (6 PLAYERS)			
5-1 +252	1630	1690	Schultz, Wallace (NM)
4-2 +74	1660	1681	Nelson, Jeffrey (VT)
3-3 -5	1705	1702	Garner, Scott (TN)
DIVISION C (6 PLAYERS)			
4-2 +278	1529	1547	Sirois, Ricky (KS)
4-2 +102	1532	1549	Kitchen, Scott (NJ)
3-3 +320	1498	1500	Roland, Tobey (MD)
DIVISION D (6 PLAYERS)			
5-1 +257	1349	1400	Sinanan, Lilla (ON)
4-2 +203	1348	1370	Blanchard, Susan (NC)
3-3 +49	1387	1384	Keras, Lydia (QC)
DIVISION E (6 PLAYERS)			
5-1 +621	1317	1357	Milton, Daniel (VA)
5-1 +355	1288	1335	Melvin, Cheryl (MI)
3-2 -256	1238	1251	Wancel, Linda
DIVISION F (6 PLAYERS)			
4-1 +319	1234	1260	Gauthier, Kevin
4-2 +314	1188	1210	Pitzer, Wilma (OH)
3-2 -162	1212	1221	Pearl, Elouise (VT)
DIVISION G (6 PLAYERS)			
5-0 +225	1120	1182	Petrie, Shauna (ON)
3-2 +231	1090	1101	Saadi, Marwan (QC)
3-3 +156	1019	1027	Lamont, Lorraine (ON)
DIVISION H (10 PLAYERS)			
5-1 +339	958	984	Horowitz, Dan (DE)
5-1 +295	847	895	Aery, Glenn
4-2 +369	991	997	Nabi, Ruth (QC)

### La Grange Park, IL: June 30

DIVISION A (8 PLAYERS)			
6-1 +654	1357	1407	Greenberg, Morris (MA)
6-1 +336	1597	1614	Schneider, Chris
5-2 +403	1405	1422	Terkell, Dan
DIVISION B (8 PLAYERS)			
5-2 +236	871	903	Krenek, Roberta

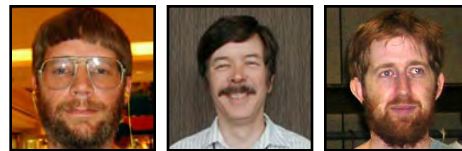
5-2 +205	907	934	Jones, Chuck
4-3 +305	944	947	Levine, Ellen
DIVISION C (8 PLAYERS)			
7-0 +433	749	852	Underwood, Wesley
5-2 +267	697	735	Antolak, Bob
4-3 +107	760	769	Batra, Ruchi (OH)
DIVISION D (8 PLAYERS)			
7-0 +252	517	614	Jones, Florida
5-2 +457	476	508	Smith, Willie Mae
3-4 +189	599	564	Sommers, Colin

### Austin, TX: June 30

DIVISION A (6 PLAYERS)			
4-2 +229	1568	1587	Dyer, Becky
3-3 +18	1474	1486	Randolph, Jason
3-3 -6	1721	1703	Riblet, Doug
DIVISION B (4 PLAYERS)			
5-1 +342	1272	1351	Sjostrom, Craig
4-2 +221	1422	1440	Colwell, Clay
3-3 +36	1404	1404	Smith, Mariah

## March Top Active Players

The following were the top 50 active rated members in the NASPA (TWL) rating system, as of April 1, 2012.



Nigel Richards, David Gibson, Adam Logan

1. 2154 Richards, Nigel (MYS)
2. 2090 Gibson, David (SC)
3. 2082 Logan, Adam (ON)
4. 2037 Wiegand, Dave (OR)
5. 2033 Leong, James (BC)
6. 2030 Appel, Scott (NJ)
7. 2029 Cappelletto, Brian (IL)
8. 2019 Weinstein, Ian (FL)
9. 2007 Johnson, Carl (OR)
10. 2004 Brockmeier, Doug (CA)
11. 2001 Bassett-Bouchard, Conrad (CA)
12. 1997 Matsumoto, Kenji (CA)
13. 1992 Peltier, Nigel (OR)
14. 1991 Bowman, Brian (KY)
15. 1967 Kramer, Jim (MN)
16. 1958 Cohen, Laurie (AZ)
17. 1955 Berofsky, Evan (ON)
17. 1955 Walton, Noah (CA)
19. 1953 Daniel, Robin Pollock (ON)
19. 1953 Lerman, Jerry (CA)
21. 1951 Jackson, Scott (MN)
22. 1948 Nemitrmansuk, Pakorn (THA)
23. 1946 Anderson, Will (NY)
23. 1946 Mallick, Joey (ME)
23. 1946 Swift, Orry (TX)
23. 1946 Wright, Trey (CA)
27. 1945 Day, Jesse (CA)
27. 1945 Luebkekmann, John (GA)
29. 1943 Del Solar, Cesar (CA)
30. 1932 O'Laughlin, John (MA)
30. 1932 Sherman, Joel (NY)

32. 1928 Okosagah, Sammy (MD)
32. 1928 Tran, Eric (AB)
34. 1921 Idalski, Jason (MI)
35. 1918 Stern, Rafi (WA)
36. 1917 Tiekert, Ron (FL)
37. 1911 Dackman, Joe (NV)
37. 1911 Tunncliffe, Matthew (ON)
39. 1909 Polatnick, Steve (FL)
39. 1909 Thevenot, Geoff (TX)
41. 1904 Benedict, Nathan (AZ)
41. 1904 Glass, Steve (FL)
43. 1901 Bednarz, Jason (MD)
43. 1901 Mancine, Dominick (CO)
45. 1897 Fukawa-Connelly, Kate (ME)
45. 1897 Robinsky, Rob (MN)
47. 1896 Armstrong, Peter (WI)
48. 1893 Edley, Joe (NY)
48. 1893 Meyer, Nick (CA)
50. 1889 Rau, Stefan (NY)

The following were the top 20 active rated members in the NASPA (CSW) rating system, as of April 1, 2012.



Craig Beevers, Nigel Richards, Adam Logan

1. 2364 Beevers, Craig (GBR)
2. 2224 Quackle (MA)
3. 2155 Richards, Nigel (MYS)
4. 2121 Logan, Adam (ON)
5. 2080 Nelkon, Philip (GBR)
6. 2042 Benedict, Nathan (AZ)
6. 2042 Cappelletto, Brian (IL)
8. 2037 May, Chris (AUS)
9. 2028 Nemitrmansuk, Pakorn (THA)
10. 2014 Eldar, David (AUS)
11. 2006 Wiegand, Dave (OR)
12. 1995 Wapnick, Joel (QC)
13. 1985 Thevenot, Geoff (TX)
14. 1981 Boys, David (QC)
15. 1962 Bernardina, Matthew (NC)
16. 1956 Adamson, Tim (MN)
16. 1956 Kantimathi, Sam (CA)
18. 1952 Berofsky, Evan (ON)
19. 1951 Koenig, David (MD)
20. 1950 Bowman, Brian (KY)

## April Top Active Players

The following were the top 50 active rated members in the NASPA (TWL) rating system, as of May 1, 2012.



Nigel Richards, David Gibson, Adam Logan

1. 2154 Richards, Nigel (MYS)
2. 2073 Gibson, David (SC)
3. 2060 Logan, Adam (ON)
4. 2037 Wiegand, Dave (OR)
5. 2029 Cappelletto, Brian (IL)
6. 2011 Leong, James (BC)
7. 2005 Appel, Scott (NJ)
8. 2004 Sherman, Joel (NY)
9. 2002 Kramer, Jim (MN)
10. 2001 Bassett-Bouchard, Conrad (CA)
11. 1998 Brockmeier, Doug (CA)
12. 1995 Matsumoto, Kenji (CA)
13. 1992 Peltier, Nigel (OR)
13. 1992 Weinstein, Ian (FL)
13. 1992 Daniel, Robin Pollock (ON)
16. 1982 Rau, Stefan (NY)
17. 1980 Johnson, Carl (OR)
18. 1977 Stern, Rafi (WA)
19. 1975 Day, Jesse (CA)
20. 1974 Bowman, Brian (KY)
21. 1970 Mallick, Joey (ME)
22. 1967 Lerman, Jerry (CA)
23. 1962 Del Solar, Cesar (CA)
24. 1958 Cohen, Laurie (AZ)
25. 1951 Jackson, Scott (MN)
26. 1948 Nemitrmansuk, Pakorn (THA)
27. 1946 Swift, Orry (TX)
28. 1945 Luebkmann, John (GA)
29. 1943 O'Laughlin, John (MA)
30. 1938 Anderson, Will (NY)
31. 1932 Cree, Chris (TX)
32. 1929 Berofsky, Evan (ON)
32. 1929 Walton, Noah (CA)
34. 1928 Okosagah, Sammy (MD)
34. 1928 Glass, Steve (FL)
36. 1926 Tran, Eric (AB)
37. 1923 Meyer, Nick (CA)
38. 1922 Wright, Trey (CA)
39. 1917 Tiekert, Ron (FL)
40. 1912 Thevenot, Geoff (TX)
40. 1912 Armstrong, Peter (WI)
42. 1911 Dackman, Joe (NV)
43. 1910 Tunncliffe, Matthew (ON)
44. 1904 Benedict, Nathan (AZ)
45. 1901 Bednarz, Jason (MD)
45. 1901 Mancine, Dominick (CO)
47. 1898 Clinchy, Evans (MA)
48. 1893 Edley, Joe (NY)
49. 1888 Epstein, Paul (MI)
50. 1884 Mead, Jeremiah (MA)

The following were the top 20 active rated members in the NASPA (CSW) rating system, as of May 1, 2012.



*Craig Beevers, Nigel Richards, Adam Logan*

1. 2364 Beevers, Craig (GBR)
2. 2224 Quackle (MA)
3. 2155 Richards, Nigel (MYS)
4. 2121 Logan, Adam (ON)

5. 2080 Nelkon, Philip (GBR)
6. 2042 Benedict, Nathan (AZ)
6. 2042 Cappelletto, Brian (IL)
8. 2037 May, Chris (AUS)
9. 2028 Nemitrmansuk, Pakorn (THA)
10. 2018 Koenig, David (MD)
11. 2014 Eldar, David (AUS)
12. 2006 Wiegand, Dave (OR)
13. 1985 Thevenot, Geoff (TX)
14. 1981 Boys, David (QC)
15. 1976 Wapnick, Joel (QC)
16. 1962 Bernardina, Matthew (NC)
17. 1956 Kantimathi, Sam (CA)
17. 1956 Adamson, Tim (MN)
19. 1952 Berofsky, Evan (ON)
20. 1932 Gabriel, Marty (IL)

## May Top Active Players

The following were the top 50 active rated members in the NASPA (TWL) rating system, as of June 1, 2012.



*Nigel Richards, David Gibson, Adam Logan*

1. 2154 Richards, Nigel (MYS)
2. 2081 Gibson, David (SC)
3. 2060 Logan, Adam (ON)
4. 2037 Wiegand, Dave (OR)
5. 2034 Sherman, Joel (NY)
6. 2029 Cappelletto, Brian (IL)
7. 2011 Leong, James (BC)
8. 2006 Day, Jesse (CA)
9. 2005 Appel, Scott (NJ)
10. 2002 Kramer, Jim (MN)
11. 2000 Bassett-Bouchard, Conrad (CA)
12. 1998 Brockmeier, Doug (CA)
13. 1996 Peltier, Nigel (OR)
14. 1995 Matsumoto, Kenji (CA)
15. 1992 Daniel, Robin Pollock (ON)
16. 1977 Stern, Rafi (WA)
17. 1971 Rau, Stefan (NY)
18. 1967 Lerman, Jerry (CA)
19. 1962 Del Solar, Cesar (CA)
20. 1959 Anderson, Will (NY)
21. 1958 Cohen, Laurie (AZ)
22. 1957 Jackson, Scott (MN)
23. 1955 Luebkmann, John (GA)
24. 1954 Berofsky, Evan (ON)
24. 1954 Johnson, Carl (OR)
26. 1953 Weinstein, Ian (FL)
27. 1948 Nemitrmansuk, Pakorn (THA)
28. 1946 Swift, Orry (TX)
29. 1943 O'Laughlin, John (MA)
30. 1937 Mallick, Joey (ME)
31. 1934 Cree, Chris (TX)
32. 1930 Odom, Lisa (MN)
33. 1929 Walton, Noah (CA)
34. 1928 Okosagah, Sammy (MD)
34. 1928 Glass, Steve (FL)

36. 1926 Bowman, Brian (KY)
37. 1923 Meyer, Nick (CA)
38. 1922 Wright, Trey (CA)
39. 1917 Epstein, Paul (MI)
39. 1917 Tiekert, Ron (FL)
41. 1912 Thevenot, Geoff (TX)
42. 1911 Dackman, Joe (NV)
43. 1910 Tunncliffe, Matthew (ON)
44. 1904 Benedict, Nathan (AZ)
44. 1904 Tran, Eric (AB)
46. 1901 Bednarz, Jason (MD)
46. 1901 Mancine, Dominick (CO)
48. 1900 Day, Darrell (TX)
49. 1898 Clinchy, Evans (MA)
50. 1893 Edley, Joe (NY)

The following were the top 20 active rated members in the NASPA (CSW) rating system, as of June 1, 2012.



*Craig Beevers, Nigel Richards, Adam Logan*

1. 2364 Beevers, Craig (GBR)
2. 2224 Quackle (MA)
3. 2155 Richards, Nigel (MYS)
4. 2121 Logan, Adam (ON)
5. 2080 Nelkon, Philip (GBR)
6. 2042 Benedict, Nathan (AZ)
6. 2042 Cappelletto, Brian (IL)
8. 2037 May, Chris (AUS)
9. 2028 Nemitrmansuk, Pakorn (THA)
10. 2018 Koenig, David (MD)
11. 2015 Wiegand, Dave (OR)
12. 2014 Eldar, David (AUS)
13. 1987 Boys, David (QC)
14. 1985 Thevenot, Geoff (TX)
15. 1977 Lipe, Chris (NY)
16. 1962 Bernardina, Matthew (NC)
17. 1956 Kantimathi, Sam (CA)
17. 1956 Adamson, Tim (MN)
19. 1955 Wapnick, Joel (QC)
20. 1952 Berofsky, Evan (ON)

## June Top Active Players

The following were the top 50 active rated members in the NASPA (TWL) rating system, as of July 1, 2012.



*Nigel Richards, David Gibson, Adam Logan*

1. 2154 Richards, Nigel (MYS)
2. 2077 Gibson, David (SC)
3. 2060 Logan, Adam (ON)
4. 2037 Sherman, Joel (NY)



5. 2029 Cappelletto, Brian (IL)
6. 2022 Wiegand, Dave (OR)
7. 2011 Leong, James (BC)
8. 2006 Clinchy, Evans (MA)
8. 2006 Day, Jesse (CA)
10. 2005 Appel, Scott (PA)
11. 2002 Kramer, Jim (MN)
12. 2000 Bassett-Bouchard, Conrad (CA)
13. 1999 Cree, Chris (TX)
14. 1998 Brockmeier, Doug (CA)
15. 1996 Peltier, Nigel (OR)
16. 1995 Matsumoto, Kenji (CA)
17. 1992 Daniel, Robin Pollock (ON)
18. 1977 Stern, Rafi (WA)
19. 1959 Anderson, Will (NY)
20. 1958 Cohen, Laurie (AZ)
20. 1958 Weinstein, Ian (FL)
22. 1957 Jackson, Scott (MN)
23. 1956 Lerman, Jerry (CA)
24. 1955 Berofsky, Evan (ON)
24. 1955 Luebkekmann, John (GA)
26. 1954 Rau, Stefan (NY)
26. 1954 Johnson, Carl (OR)
28. 1953 Del Solar, Cesar (CA)
29. 1948 Nemitrmansuk, Pakorn (THA)
30. 1946 Swift, Orry (TX)
31. 1941 Odom, Lisa (MN)
31. 1941 Tiekert, Ron (FL)
33. 1935 Epstein, Paul (MI)
34. 1930 Mallick, Joey (ME)
35. 1928 Okosagah, Sammy (MD)
35. 1928 Glass, Steve (FL)
37. 1926 Bowman, Brian (KY)
38. 1923 Idalski, Jason (MI)
38. 1923 Meyer, Nick (CA)
40. 1921 Wright, Trey (CA)
41. 1920 Bednarz, Jason (MD)
42. 1912 Thevenot, Geoff (TX)
43. 1911 Dackman, Joe (NV)
44. 1910 Tunnicliffe, Matthew (ON)
45. 1907 Walton, Noah (CA)
46. 1904 Benedict, Nathan (AZ)
46. 1904 Tran, Eric (AB)
48. 1903 Day, Darrell (TX)
49. 1902 Rosin, Sam (NJ)
50. 1901 Mancine, Dominick (CO)

The following were the top 20 active rated members in the NASPA (CSW) rating system, as of July 1, 2012.



Craig Beevers, Nigel Richards, Adam Logan

1. 2364 Beevers, Craig (GBR)
2. 2224 Quackle (MA)
3. 2155 Richards, Nigel (MYS)
4. 2121 Logan, Adam (ON)
5. 2080 Nelkon, Philip (GBR)
6. 2042 Benedict, Nathan (AZ)
6. 2042 Cappelletto, Brian (IL)
8. 2037 May, Chris (AUS)

9. 2028 Nemitrmansuk, Pakorn (THA)
10. 2015 Wiegand, Dave (OR)
11. 2014 Eldar, David (AUS)
12. 2012 Koenig, David (MD)
13. 1987 Boys, David (QC)
14. 1985 Thevenot, Geoff (TX)
15. 1962 Bernardina, Matthew (NC)
16. 1961 Lipe, Chris (NY)
17. 1956 Kantimathi, Sam (CA)
17. 1956 Adamson, Tim (MN)
19. 1955 Wapnick, Joel (QC)
20. 1952 Berofsky, Evan (ON)

## Upcoming Tournaments

by the Tournament Committee

**AUGUST 2, LCT - AKRON, OH:** Thu: 6:00 PM, 4 RDS. Mod.Swiss/K-H. **\$2 entry fee to cover participation fee.** No prizes. Debacco-Zeigler Residence, 179 Goodhue Drive, Akron, OH 44313. CT. Pete Zeigler, <petezeigler@gmail.com>. HA.

**AUGUST 5, ASHEVILLE, NC:** Sat: 10:00 AM, 8 RDS. R-R/8+KOTH. EF: \$20. PRZ: \$100%. **Register by THU. August 2nd.** Atlanta Bread Company, 683 Merrimon Avenue. CT. William Snoddy, 725 Bear Left, Asheville, NC 28805, 828-252-8154, <williamrsnoddy@gmail.com>, Joann Goddard, 828-252-4895 or Jacob Cohen, 828-691-0320. HA.

**AUGUST 5, BERKELEY, CA:** Sun: Noon, 6 RDS. EF: \$30. **Entry fee incl. buffet LUN.** The Viceroy Indian Restaurant, 21 Shattuck Square, Berkeley, CA 94704. CT. Jesse Day, <magratheasaphod@gmail.com>. HA.

**AUGUST 5, BRATTLEBORO, VT:** Sun: 9:30 AM, 6 RDS. R-R/6+KOTH. EF: \$30. **Entry due by July 30th. Payment to Ed Liebfried, 981 Carpenter Hill Rd, Guilford, VT 05301 or by PayPal to kathnh@comcast.net.** Marlboro College Graduate Center, 28 Vernon St., Brattleboro, VT. CT. Kath Mullholand, <kathnh@comcast.net> or Ed Liebfried, 981 Carpenter Hill Rd, Guilford, VT 05301, 971-344-8730, <ed.liebfried@gmail.com>. HA.

**AUGUST 11, MOUNT LAUREL, NJ:** EF: \$15. **Newcomer's Event—limited to players rated 1100 and below. Limited to 10 players. Game 1 begins promptly at 9:30 a.m.** Late Bird: EF: \$15. **Open to all NASPA members in good standing. Limited to 12 players. Game 1 begins promptly at 4:30 p.m.** Wegmans Mt Laurel, 2 Centerton Rd., Mt Laurel, NJ 08054, (856) 439-7300. CT. Ted Barrett, (309)-648-1702, <tedbarrettgp@gmail.com>, Michael Kapernaros, (860)-395-9094, <michael.kapernaros@gmail.com> or Linda Wancel. HA.

**AUGUST 11-15, NATIONAL SCRABBLE CHAMPIONSHIP - ORLANDO, FL:** Sat: 9:00 AM, 7 RDS. Sun: 9:00 AM, 7 RDS. Mon: 9:00 AM, 7 RDS. Tue: 9:00 AM, 7 RDS. Wed: 9:00 AM, 4 RDS. **Must check-in by 10 p.m. on FRI. For more details, please visit the event webpage.** Loews Royal Pacific Resort, 6300 Hollywood Way,

Orlando, FL 32819, (888) 430-4999. CT. NASPA, <nsc@scrabbleplayers.org>. HA.

**AUGUST 18, DALLAS, TX:** Sat: 10:30 AM, 6 RDS. EF: \$35. **Round robin groups (with director discretion predicated upon mix of field). LUN. after 2 games. Walk-ins o.k.** Crowne Plaza Suites - Dallas Park Cntrl., 7800 Alpha Rd, Dallas, TX 75240. CT. Bryan Pepper, 817-538-7750, <screamingmonkeys3@yahoo.com>. HA.

**AUGUST 18, EDMONTON, AB, CAN:** Sat: 9:30 AM, 6 RDS. R-R/6+KOTH. EF: \$35 (CAN). **Register as early as possible but no later than the THU. before the tournament.** Stathcona County Community Centre, 401 Festival Lane, Sherwood Park. CT. Huguette Settle, 112 Clareview Road NW, Edmonton, Alberta, Canada T5A 3Y3, 780-476-8019, <hsettle@hotmail.com>. HA.

**AUGUST 18, LEVITTOWN, PA:** Sat: 10:00 AM, 6 RDS. R-R/6+KOTH. EF: \$40. Limited to 42 players. **Deadline for registration is August 16, 2012. Check-in at 9:45. The organizer reserves the right to adjust the size of DIVS. depending on attendance.** Emilie Methodist Church n Social Hall, 7300 New Falls Road, Levittown, PA 19055, 215-945-5502. CT. Judy Cole, 215-946-1653 or 978-287-5179, <judithcole@msn.com>. HA.

**AUGUST 18-26, IRELAND TOUR AND TOURNAMENT:** EF: \$80. **100% returned as prizes. 12 games, OWL and CWS DIVS. depending on number of contestants.** Ireland. CT. Rich Baker, 707 502 7518, <scrabbletours@yahoo.com>. HA.

**AUGUST 19, GUELPH, ON, CAN:** Sun: 2:30 PM, 6 RDS. EF: \$30 (CAN). **DIVS. of 6-11 depending on number of entrants. Limited to 34 entrants.** Squirrel Tooth Alice's, 649 Scottsdale Drive, Unit 5, Guelph, ON. CT. Andy Saunders, 82 Clairfields Drive West, Guelph, ON N1G 5H8, (519) 824-8930 or (416) 668-7500, <andy@andysthoughts.com>. HA.

**AUGUST 25, AUSTIN, TX:** Sat: 10:30 AM, 6 RDS. EF: \$20. **In addition to TWL DIVS.(s), a Collins DIV. will be offered provided that there are at least 4 players in the Collins DIV. 10 point challenge penalty will be used in Collins DIV.** Salvation Army Corps Community Center, 1001 Cumberland Road, Austin TX 78704, 512-442-3212. CT. Geoff Thevenot, <gwthevenot@gmail.com> or Jean McArthur. HA.

**AUGUST 25, BAYSIDE QUEENS, NY:** Sat: 9:00 AM, 9 RDS. R-R/K-H. **\$66.50 entry fee incl. player participation fee, deli LUN., coffee & tea all day, RM.rental & prizes.** ADRIA Hotel & Confrence Center, 221-17 Northern Blvd, Bayside Queens, NY, 1-800-27-ADRIA. CT. Ginger White, 631-

STILL MORE continued on p. 17

## Still More Tournneys

from *MORE UPCOMING*, p. 18

399-2579, <kewlcatz@optonline.net>. HA.

**AUGUST 25, FORT LAUDERDALE, FL:** Sat: 9:00 AM, 8 RDS. R-R. EF: \$35. **4 DIVS. determined by ratings. Entry due by August 16, 2012, after the 16th \$5.00 late fee.** Fort Lauderdale Bridge Club, 700 N E 6th Terrace Fort Lauderdale, Florida 33304, 954-630-8779. CT. Tim Wise, 954-630-8779 or mobile 954-461-3333, <Wise9778@gmail.com>. HA.

**AUGUST 25, ROCKY RIVER, OH:** Sat: 9:30 AM, 7 RDS. R-R/8. EF: \$25. **Entry fee increases to \$30 if received after 8/8 and by 8/22. \$35 cash only at the door (walk-ins must arrive by 9:15).** West Shore Unitarian Universalist Church, 20401 Hilliard Blvd., Rocky River, Ohio. CT. Dan Stock, 3614 Kings Mill Run, Rocky River OH 44116, (440) 356-7366, <danielstock@aol.com>. HA.

**AUGUST 25, STRATFORD, ON, CAN:** STRATFORD SUMMER SCRABBLEÆ TOURNAMENT. Sat: 9:00 AM, 8 RDS. R-R/K-H. EF: \$46 (CAN)/\$46 (US). **LUN. and snacks provided. Registration begins at 8 a.m. Cheques should be made payable to: Stratford Scrabble Club (NASPA Club #546).** Knights of Columbus Hall, 93 Morgan St., Stratford, ON. CT. Terry Aitken, 172 Sir Adam Beck Road, Stratford, Ontario N5A 8C2, (519) 273-2233, <terence.aitken@gmail.com>. HA.

**AUGUST 25-26, TCC - RICHMOND, BC, CAN:** BC Provincial Scrabble Championship. **12 Rounds.** TBA, Richmond, BC. CT. Jesse Matthews, <tournament@jesse-matthews.com>. HA.

**AUGUST 31-SEPTEMBER 3, PORTLAND, OR:** Early Bird: Fri: 9:00 AM, 8 RDS. R-R/8. EF: \$30. Main Event: Sat: 9:00 AM, 8 RDS. Sun: 9:00 AM, 8 RDS. Mon: 9:00 AM, 4 RDS. EF: \$120. **TWL DIV.: Round robin groups of approx. 16-20 players. Minimum of two DIVS., three DIVS. expected. Collins: 1 open DIV., using 10 point per word challenge penalty.** Late Bird: Mon: 2:30 PM, 4 RDS. EF: \$15. **2 DIVS. Pairings based on attendance.** University Place Hotel, 310 SW Lincoln St., Portland OR 97201, 1-866-845-4647. HP: \$79 standard, \$89 deluxe. CT. Dave Johnson, 269 N. Hayden Bay Dr., Portland, OR 97217, 503-283-8515, <TheProf2@aol.com>. HA.

**SEPTEMBER 1-3, ALPHARETTA, GA:** Location to be determined. CT. Ryan Fischer, <ryan@charlottescrabble.com> or Joey Krafchick, <kraftyscrabble@yahoo.com>. HA.

**SEPTEMBER 1-3, IRVING, TX:** 2012 Mid-Cities Labor Day Weekend ScrabbleÆ Adventure. Sat: 11:00 AM, 8 RDS. Sun: 9:00 AM, 4 RDS. Mod.Swiss/K-H. EF: \$80/\$75/\$70/\$65. **\$20 student discount**

**for main event only. PRE-REGISTRATION REQUIRED: All entries must be received by August 28. Mandatory check-in on SAT., 9-10:30 am.** Late Bird: Mon: 11:00 AM, 5 RDS. R-R/6+KOTH. EF: \$25. **Check in from 10 - 10:30.** Westin Hotel, 4545 W. John Carpenter Fwy, Irving, TX, (972) 929-4500. HP: \$79 for 2 people; \$89 for 3-4 people - ask for ScrabbleÆ rate. Free parking. Free hotel shuttle from DFW Airport (call hotel ahead to reserve). CT. Mary Rhoades, PO Box 211993, Bedford, TX 76095, 817-718-3115, <mrhoadestx@gmail.com>. HA.

**SEPTEMBER 1-3, NEW YORK, NY:** Sat: 10:00 AM, 8 RDS. Sun: 10:00 AM, 8 RDS. Mon: 10:00 AM, 5 RDS. **DIV. A (1700+); DIV. B (1400-1699); DIV. C (1100-1399); DIV. D (under 1100). 1 open Collins DIV. (8-player minimum required). Unlimited playups as long as top three DIVS. remain even.** NY Academy of Medicine Conference Center, 1216 5th Avenue (at 103rd Street), New York, NY 10029, 212-822-7315. CT. Paul Avrin, 212-799-6092 NO CALLS BEFORE 11 am EDT, <pinvar1@aol.com>, Cornelia Guest, 203-244-5324 NO CALLS BEFORE 11 am EDT, <corneliaguest@gmail.com> or Jason Keller. HA.

**SEPTEMBER 9, BERKELEY, CA:** Sun: Noon, 6 RDS. EF: \$30. **Entry fee incl. buffet LUN.** The Viceroy Indian Restaurant, 21 Shattuck Square, Berkeley, CA 94704. CT. Conrad Bassett-Bouchard, <conradbb@gmail.com>. HA.

**SEPTEMBER 9, NEWARK, DE:** Sun: 10:00 AM, 8 RDS. R-R/8+KOTH. EF: \$55. **18% of entry fees go to the Kristol Center as a rental fee/donation, the rest after expenses will go to the prize pool.** Kristol Center for Jewish Life, University of Delaware, 47 W. Delaware Ave., Newark, DE 19711. CT. Daniel Horowitz, 223 Waverly Road, Wilmington, DE 19803, (302) 655-7346, <dhorowit@alumni.law.upenn.edu>. HA.

**SEPTEMBER 11, LCT - INDEPENDENCE, OH:** Tue: 6:00 PM, 4 RDS. EF: \$4. **Sponsored by NASPA Club #164 (Independence, OH). Pay at the door.** Angie's Pizza, 6932 Hillside Road, Independence, OH 44131. CT. Christopher Sheppard, <cpshep2@gmail.com>. HA.

**SEPTEMBER 15, CARY, NC:** Sat: 9:30 AM, 8 RDS. R-R/8+KOTH. EF: \$35. **Entry limited to first 24 paid entrants.** Home of Robb Griffith, 306 Kinellan Lane, Cary, NC 27519. CT. David Klionsky, 1010 N. Duke St. Durham, NC 27701, 919-699-9831, <trianglescrabble@hotmail.com>. HA.

**SEPTEMBER 15, DALLAS, TX:** Sat: 10:30 AM, 6 RDS. EF: \$35. **Round robin groups (with director discretion predicated upon mix of field). LUN. after 2 games. Walk-ins o.k.** Crowne Plaza Suites - Dallas Park Cntrl., 7800 Alpha Rd, Dallas, TX

75240. CT. Bryan Pepper, 817-538-7750, <screamingmonkeys3@yahoo.com>. HA.

**SEPTEMBER 15, HUDSON, OH:** Sat: Noon, 7 RDS. EF: \$35. **Pay \$5 more at door (cash) or \$10 more at door (check).** Clarion Inn, 6625 Dean Memorial Parkway, Hudson, OH 44236. CT. Christopher Sheppard, 2237 Fairway Blvd., Hudson, OH 44236, 330-656-2476, <cpshep2@gmail.com>. HA.

**SEPTEMBER 15, MILLBURN, NJ:** Details TBA. TBA. CT. Don Carson. HA.

**SEPTEMBER 15-16, NEW ORLEANS (KENNER), LA:** 11th Annual Cajun Scrabble Fest. Sat: 11:00 AM, 7 RDS. Sun: 9:00 AM, 5 RDS. EF: \$80/\$70/\$60/\$50. **All entries must be received by September 12. Entries received by August 31 are eligible for Early Bird prize drawing.** Days Inn New Orleans Airport, 1021 Airline Drive, Kenner, LA 70062, 504-464-1544 or 1-800-333-8278. HP: A RM.rate of \$50/night has been negotiated. Ask for the Scrabble block. The \$50 rate is also available for 3 days before and 3 days after the tourney. CT. Lila Crotty, 504-885-1616, <liliuokalani\_q@yahoo.com>. HA.

**SEPTEMBER 16, GUELPH, ON, CAN:** Sun: 2:30 PM, 6 RDS. EF: \$30 (CAN). **DIVS. of 6-11 depending on number of entrants. Limited to 34 entrants.** Squirrel Tooth Alice's, 649 Scottsdale Drive, Unit 5, Guelph, ON. CT. Andy Saunders, 82 Clairfields Drive West, Guelph, ON N1G 5H8, (519) 824-8930 or (416) 668-7500, <andy@andysthoughts.com>. HA.

**SEPTEMBER 21-23, TORONTO, ON, CAN:** Early Bird: Fri: 9:00 AM, 8 RDS. **Chew pairings. Entry fees TBA. Register by September 14. CSW DIV. if enough interest.** Main Event: Sat: 9:15 AM, 8 RDS. Sun: 10:00 AM, 6 RDS. **Chew pairings. Entry fees TBA. Register by September 14. CSW DIV. if enough interest.** Earl Bales Community Centre, 4169 Bathurst Street, Toronto, ON. CT. John Chew, <poslfit@gmail.com>. HA.

**SEPTEMBER 22, NORWALK, CT:** Sat: 10:00 AM, 8 RDS. EF: \$60. **\$20 discount for first-time tournament players. \$5 discount for prepaid entries (paid before the date of the tournament). Check in at 9 a.m.** Main Event 2: Sat: 10:00 AM, 3 RDS. EF: \$20. **Unrated novice tournament (new players and players rated under 1,000). Check in at 9 a.m. \$5 discount for youth players and first-time players.** Main Event 3: Sat: 2:00 PM, 4 RDS. EF: \$25. **Rated novice tournament (new players and players rated under 1,000). Check in at 1 p.m. \$5 discount for youth players and first-time players.** Chess Club of Fairfield County, 710 West Avenue, Norwalk, CT. CT. Cornelia Guest, 203-244-5324, <corne-

*MORE UPCOMING continued on p. 18*

**More Upcoming Events***from UPCOMING TOURNAMENTS, p. 19*

liastguest@gmail.com&gt;. HA.

**SEPTEMBER 22-23, REGINA, SK, CAN:** Regina's 6th Annual Rated Scrabble Tournament. Sat: 9:00 AM, 8 RDS. Sun: 9:00 AM, 6 RDS. R-R/K-H. EF: \$55 (CAN). **Entry fee incl. 1 LUN. Email or Mail Registrations to: Michael Bray, 2 ½ 31 Angus Rd, Regina, SK S4R 3K9. md-bray@accesscomm.ca.** Regina Duplicate Bridge Club, 349 Albert Street, Regina, SK. CT. Michael Bray, 2-31 Angus Rd, Regina, SK S4R 3K9, (306) 543-8961 or (306) 533-8376, <mdbray@accesscomm.ca>. HA.

**SEPTEMBER 23, PHILADELPHIA, PA:** 7 games. Details TBA. TBD. CT. Connie Creed, <partygrl@verizon.net>. HA.

**SEPTEMBER 24-OCTOBER 5, EASTERN MEDITERRANEAN CRUISE:** EF: \$100. **Join your fellow scrabble players on a luxurious cruise of a lifetime and enjoy the pleasures that Italy, Turkey, and Greece have to offer!** Celebrity Equinox, (888) 727-4907 X13428. HP: 8 veranda, class 2B cabins at \$2,059, and 2 inside cabins at \$1,729, are reserved. Prices valid until April 29, 2012: (does not include taxes and fees). Call number above and speak to Jackie Parker. Use Scrabble Group code #2586937. CT. Linda Wancel, 27-23 170th Street, Flushing, NY 11358, <scrabbleamazon@aol.com>. HA.

**SEPTEMBER 28-30, BLOOMINGTON, MN:** Fri: 5 RDS. Sat: 8 RDS. Sun: 7 RDS. EF: \$125. **One open DIV. (TWL). Open CSW DIV. if at least six registrants by 8/31/12. Pairings to be determined based on number of entrants.** Hyatt Place Bloomington Airport-South, 7800 International Drive, Bloomington, MN 55425, 952-854-0700. HP: Discounted rate of \$104/night on SAT. and SUN. Call hotel and mention tournament. Deadline for discounted hotel rate is 8/27/12. CT. Scott Jackson, 612-860-8130, <scjackson36@gmail.com>. HA.

**SEPTEMBER 28-30, CHARLESTON, WV:** 7th Annual WV Scrabble Tournament. Early Bird: Fri: 6:00 PM, 4 RDS. R-R/K-H. EF: \$20. **Groups of 4 sorted by rating. Main Event: Sat: 9:00 AM, 9 RDS. Sun: 9:00 AM, 4 RDS. EF: \$79/\$64/\$49. 3 DIVS., divided at 1450 and 900. Format TBD based on attendance.** Ramada Inn Charleston Downtown, 600 Kanawha Blvd. East, Charleston, WV, 304-344-4092. HP: \$79 per night single or double before September 2 (mention Scrabble Tournament rate). CT. Brad Mills, 304-345-0484, <wvscrabble@gmail.com>. HA.

**SEPTEMBER 29, ASBURY PARK, NJ:** Scrabble by the Seal: A Fundraiser for the Arc of Monmouth. Sat: 7 RDS. **Entry fee: \$55 open, \$35 unrated/newcomers, \$20 for juniors. 1 open DIV. Pairing system: 6 rounds Swiss + 1 round King of the Hill.**

**Registration deadline TBA. No walk-ins.** Berkeley Oceanfront Hotel, 1401 Ocean Avenue, Asbury Park, NJ 07712, (732) 776-6700. CT. Jason Keller, (732) 317-8969 (prefer email contact), <orangejkel@gmail.com>. HA.

**SEPTEMBER 29, AUSTIN, TX:** Sat: 10:30 AM, 6 RDS. EF: \$20. **In addition to TWL DIVS.(s), a Collins DIV. will be offered provided that there are at least 4 players in the Collins DIV.** 10 point challenge penalty will be used in Collins DIV. Salvation Army Corps Community Center, 1001 Cumberland Road, Austin TX 78704, 512-442-3212. CT. Geoff Thevenot, <gwthevenot@gmail.com> or Jean McArthur. HA.

**SEPTEMBER 29, FORT LAUDERDALE, FL:** Sat: 9:00 AM, 8 RDS. R-R. EF: \$35. **4 DIVS. determine by ratings. Entry due by September 16, 2012, after the 16th \$5.00 late fee.** Fort Lauderdale Bridge Club, 700 N E 6th Terrace Fort Lauderdale, Florida 33304, 954-630-8779. CT. Tim Wise, 954-630-8779 or mobile 954-461-3333, <Wise9778@gmail.com>. HA.

**SEPTEMBER 29-30, NACOGDOCHES, TX:** Sat: 11:00 AM, 7 RDS. Sun: 9:00 AM, 5 RDS. EF: \$75. **Walk-ins accepted only if space available. Group DIN. & anagram contest SAT. night. Mail to Brent D. Beal, 2534 Carole St, Nacogdoches, TX 75965. Paypal by request only (brent@thebeals.net).** The Old University Building, 515 N. Mound Street, Nacogdoches, Texas 75961. HP: Driving directions, hotel suggestions and other information will be emailed to all registered participants approx. two weeks before the tournament. Participants are responsible for their own lodging. CT. Brent D. Beal, 2534 Carole Street, Nacogdoches, TX 75965, 225-802-7015, <brent@thebeals.net>. HA.

**SEPTEMBER 30, COVINA, CA:** Sun: 11:00 AM. EF: \$45. **Game schedule, DIVS., and pairings determined at director's discretion, based on attendance.** Red Devil Pizza, 116 W. Badillo St., Covina, CA 91723. CT. Cesar Del Solar, 310-365-6495, <delsolar@gmail.com>. HA.

**OCTOBER 4, LCT - AKRON, OH:** Thu: 6:00 PM, 4 RDS. Mod.Swiss/K-H. **No entry fee.** Debacco-Zeigler Residence, 179 Goodhue Drive, Akron, OH 44313. CT. Dallas Johnson, 330-676-1723, <dallas@neoscrabble.com>. HA.

**OCTOBER 6, CAMBRIDGE, ON, CAN:** Sat: 9:00 AM, 7 RDS. EF: \$40 (CAN). **DIVS. of 16 players using "boxed fours" pairing format. LUN. is provided.** Cambridge Christian School, 229 Myers Road, Cambridge, ON. CT. John Robertson, 17 Fourth Avenue, Cambridge, ON, N1S 2C9, Canada, 519-621-6432, <jgrobertson@sympatico.ca>. HA.

**OCTOBER 6, NORWALK, CT:** Sat:

10:00 AM, 8 RDS. EF: \$60. **\$20 discount for first-time tournament players. \$5 discount for prepaid entries (paid before the date of the tournament). Check in at 9 a.m.** Main Event 2: Sat: 10:00 AM, 3 RDS. EF: \$20. **Unrated novice tournament (new players and players rated under 1,000). Check in at 9 a.m. \$5 discount for youth players and first-time players.** Main Event 3: Sat: 2:00 PM, 4 RDS. EF: \$25. **Rated novice tournament (new players and players rated under 1,000). Check in at 9 a.m. \$5 discount for youth players and first-time players.** Chess Club of Fairfield County, 710 West Avenue, Norwalk, CT. CT. Cornelia Guest, 203-244-5324, <corneliasguest@gmail.com>. HA.

**OCTOBER 7, BERKELEY, CA:** Sun: Noon, 6 RDS. EF: \$30. **Entry fee incl. buffet LUN.** The Viceroy Indian Restaurant, 21 Shattuck Square, Berkeley, CA 94704. CT. Chris Patrick Morgan, <xpmorgan@gmail.com>. HA.

**OCTOBER 7, BETHEL, CT:** Sun: 10:30 AM, 7 RDS. **Check-in by 10:00. Pairings will be either round robin or round robin and KOH depending on entries. 16 player cut-off.** Guest residence, 135 Codfish Hill Rd., Bethel, CT 06801. CT. Cornelia Guest, <CorneliaSGuest@gmail.com>. HA.

**OCTOBER 7, GUELPH, ON, CAN:** Sun: 2:30 PM, 6 RDS. EF: \$30 (CAN). **DIVS. of 6-11 depending on number of entrants. Limited to 34 entrants.** Squirrel Tooth Alice's, 649 Scottsdale Drive, Unit 5, Guelph, ON. CT. Andy Saunders, 82 Clairfields Drive West, Guelph, ON N1G 5H8, (519) 824-8930 or (416) 668-7500, <andy@andysthoughts.com>. HA.

**OCTOBER 7, LAGUNA WOODS, CA:** Sun: 9:00 AM, 7 RDS. EF: \$45. **Late Fee \$10, after Fri before event. Modified round robin. Prizes: 1st \$90; 2nd \$50 in every group of 8.** Laguna Woods Village, Clubhouse 5, Rm 1, 26252 Punta Alta, Laguna Woods, California 92637. CT. Gary Moss, (949) 510-1673, <jftsoi.moss@gmail.com>. HA.

**OCTOBER 10-14, CALGARY, AB, CAN:** 17th Annual Western Canadian Scrabble Championship. Early Bird: Wed: 9:00 AM, 8 RDS. EF: \$50 (CAN)/\$50 (US). **3 equal DIVS. based on rating. Registration deadline: October 4, 2012. No late entries accepted.** Early Bird 2: Thu: 9:00 AM, 8 RDS. EF: \$50 (CAN)/\$50 (US). **3 DIVS. divided at 1500 & 1100, no play ups. Registration deadline: October 4, 2012. No late entries accepted.** Main Event: Fri: 9:00 AM, 8 RDS. Sat: 9:00 AM, 8 RDS. Sun: 9:00 AM, 5 RDS. EF: Div. 1: \$110 (CAN)/\$110 (US), Div. 2: \$90 (CAN)/\$90 (US), Div. 3: \$70 (CAN)/\$70 (US), Div. 4: \$50 (CAN)/\$50 (US). **4 DIVS. divided by**

*STILL MORE continued on p. 19*

## Still More Tournneys

from *MORE UPCOMING*, p. 20

**rating at 1600, 1300, 1000, with 100 point play up. Registration deadline: October 4, 2012. No late entries accepted.** Radisson Airport Hotel, 2120 16 Ave. NE, Calgary, Alberta, Canada, (403) 291-4666 or (800) 333-3333. HP: \$124 Cdn. + tax single/double. CT. Siri Tillekeratne, 16 Cedarwood Pl. SW, Calgary, Alberta, T2W 3G6, Canada, (403) 281 2459, <sirit@shaw.ca>. HA.

**OCTOBER 12-14, TCC - WACO, TX:** State of Texas Scrabble Championship. Early Bird: **Details TBA.** Main Event: **Details TBA.** Clarion Hotel, 801 South 4th Street (on I-35), Waco, TX 75706, 254-757-2000. HP: \$79, one to four people, and will include a hot BK. each day of stay. The site has a very large interior two-story atrium with a indoor heated pool. CT. Michael Willis, <tilebag1@sbcglobal.net>. HA.

**OCTOBER 13, INDEPENDENCE, OH:** Scrabble 4 Hope. Sat: 10:00 AM, 7 RDS. R-R/Mod.R-R. EF: \$35. **Discounted entry fee of \$65 for both SAT. and SUN.**

## Bingo Skills Answers

*Don't read further in this section until you've looked at the quiz on page 22.*

TWL answers: APSIDAL, ARMLESS, BELYING, DOGGERS, EXACTED, SAN-SARS, SIXTHLY, TRICKIE, BRASSIES, CAVITARY, GROUPIES, HAMMADAS, LAGGINGS, OVERBOIL, PEDIGREE, RECENTER, REMIGIAL, REPROACH, SECRETED, SMEEKING, DYNAMIT-ED, GERARDIAS, GLISSADED, LIMBEREST.

CSW answers: ARCHEST, BUGONGS, FIBROSE, FISSLES, INDEWED, LURINGS, MAMPOER, VACUIST, BRONZITE, COTTABUS, ENLARDED, KRUMPING, OLIGEMIA, OVERTRIP, PALUDINE, PROPPANT, TESTRILL, TETRAPLA, TOSHIEST, UMBRATIC, DEODORISE, GAGGERIES, SIDERATES, SURGELESS.

TWL answers: AGINNER, CANAPES, COMETIC, GINGERS, GRASSES, PETERED, SAHUARO, TEMPEST, ANODIZES, DECLARES, ENDOGENY, GILLYING, INVOLVES, MESSAGES, OUTCAPER, OUTSMART, POSITION, PREPPILY, SALTNESS, TRINDLED, APPRAISER, CARTHORSE, HAPPENING, KIBITZERS.

CSW answers: BEAGLED, BETTONG, CWTCHED, FOUTRAS, NAMASTE, SDEINED, STANYEL, TWIZZLE, BREADIER, CIABATTE, CROMORNE, EMBAILED, FAINTIER, FORMATED, GUESIRE, LEMONING, ORIFEXES, OVERBRIM, QUETHING, STANYELS, BOMBSITES, CITRANGES, ENCHAFING, SAPONARIA.

**events. DIVS. of 8-12 players divided approx. at 1500+, 1350, 1200, 1000 and <1000. Requests to "Play up" will be granted at the Director's discretion.** Cornerstone of Hope, 5905 Brecksville Rd., Independence, Ohio. CT. Dean J. Scouloukas, 10900 Pearl Rd., Ste. C-2, Strongsville, OH 44136, (216) 421-6207, <djs3771@aol.com>. HA.

**OCTOBER 13, PHILADELPHIA, PA:** 7 games. **Details TBA.** TBD. CT. Connie Creed, <partygrl@verizon.net>. HA.

**OCTOBER 14, BAYSIDE QUEENS, NY:** Sat: 9:00 AM, 9 RDS. R-R/K-H. **\$66.50 entry fee incl. player participation fee, deli LUN., coffee & tea all day, RM. rental & prizes.** ADRIA Hotel & Confrence Center, 221-17 Northern Blvd, Bayside Queens, NY, 1-800-27-ADRIA. CT. Ginger White, 631-399-2579, <kewlcatz@optonline.net>. HA.

**OCTOBER 14, ELK HORN, IA:** Words and Windmills Tournament. Sun: 9:00 AM, 7 RDS. R-R/2K-H. EF: \$30. **Check in at 8:30 a.m. To play, you must be present by 8:45 a.m. Entry deadline: THU., October 11, 2012. No refunds after that date.** Elk Horn Town Hall, 4212 Main St., Elk Horn, Iowa 51531. CT. Kirk Troutman, 6702 South 83rd Avenue, Ralston, NE 68127, 402-216-5571, <ralstonscrabble@gmail.com>. HA.

**OCTOBER 14, INDEPENDENCE, OH:** Scrabble 4 Hope. Sun: 10:00 AM, 7 RDS. R-R/Mod.R-R. EF: \$35. **Discounted entry fee of \$65 for both SAT. and SUN. events. DIVS. of 8-12 players divided approx. at 1500+, 1350, 1200, 1000 and <1000. Requests to "Play up" will be granted at the Director's discretion.** Cornerstone of Hope, 5905 Brecksville Rd., Independence, Ohio. CT. Dean J. Scouloukas, 10900 Pearl Rd., Ste. C-2, Strongsville, OH 44136, (216) 421-6207, <djs3771@aol.com>. HA.

**OCTOBER 14, TCC - GREATER TORONTO, ON, CAN:** Toronto v. Mississauga. Sun: 10:00 AM, 7 RDS. **TCC - entry limited to members of Toronto and Mississauga clubs.** TBA. CT. John Chew, <poslfit@gmail.com> or Shan Abbasi, <shan19@gmail.com>. HA.

**OCTOBER 18-21, LAKE GEORGE, NY:** Early Bird: Thu: Noon, 8 RDS. EF: \$50. **Format based on number of entries. Registration begins at 11 a.m. Pay at the door only.** Early Bird 2: Fri: Noon, 5 RDS. EF: \$35. **Format based on number of entries. Registration begins at 11 a.m. Pay at the door only.** Main Event: Fri: 8:00 PM, 3 RDS. Sat: 10:00 AM, 7 RDS. Sun: 9:30 AM, 5 RDS. **Registration begins at 7 p.m. on Fri. Entry fee: TWL: \$85; Collins: \$100. TWL event limited to 140 players; Collins event limited to 16 players (10 point per word challenge penalty for Collins DIV.).** Tiki Resort, 2 Canada Street, Lake George, NY, 518-668-5744. HP: Reserve through

Annette Tedesco. RM.rates are: \$127/person double occupancy; \$178/person single occupancy; \$107/person triple occupancy. Package incl. all taxes and gratuities, two deluxe continental BK., and full-buffet DIN. SAT.. CT. Annette Tedesco, 41 Ferry Lane, Stillwater, NY 12170-1350, 518-664-1619, <101ted@nycap.rr.com>. HA.

**OCTOBER 19-21, LINDEN, MI:** Faux Fenthion Tournaments. Early Bird: Fri: 12:30 PM. EF: \$10. **5-7 rounds, depending on number of entries. One open DIV.: pairings determined by Director based on attendance. Limited to 16 players. Cash only at the door.** Main Event: Sat: 9:00 AM, 7 RDS. R-R/8. EF: \$40. **Entry fee increases to \$45 after 10/12 and before 10/19. \$50 (cash) at the door.** Late Bird: Sun: 9:00 AM, 7 RDS. Mod.Swiss. EF: \$30. **\$35 cash only at the door. One open DIV. with class prize.** Loose Senior Citizen Center, 707 N Bridge Street, Linden, MI 48451. CT. Margaret Sutherland, c/o Red Dragon Hobbies, PO Box 399, Otisville, MI 48463, 810-653-0152, <dragonlady317@charter.net>. HA.

**OCTOBER 20, DALLAS, TX:** Sat: 10:30 AM, 6 RDS. EF: \$35. **Round robin groups (with director discretion predicated upon mix of field). LUN. after 2 games. Walk-ins o.k.** Crowne Plaza Suites - Dallas Park Cntrl., 7800 Alpha Rd, Dallas, TX 75240. CT. Bryan Pepper, 817-538-7750, <screamingmonkeys3@yahoo.com>. HA.

**OCTOBER 20-21, ASHEVILLE, NC:** Sat: 9:00 AM, 8 RDS. Sun: 9:00 AM, 6 RDS. Modified RR + KotH, Gibson Rule. EF: Div. 1: \$100, Div. 2 and lower: \$80. **DIV. One for those rated approx. 1700 and higher, play up if within 100 points. Four lower DIVS. at the discretion of the directors.** Senior Opportunity Center, 36 Grove Street Asheville, NC. CT. William Snoddy, 828-252-8154, <williamrsnoddy@gmail.com>, Joann Goddard, 828-252-4895, <artichokes58@yahoo.com> or Jacob Cohen, 828-691-0320, <jacobwoodworker@gmail.com>. HA.

**OCTOBER 27, AUSTIN, TX:** Sat: 10:30 AM, 6 RDS. EF: \$20. **In addition to TWL DIVS.(s), a Collins DIV. will be offered provided that there are at least 4 players in the Collins DIV. 10 point challenge penalty will be used in Collins DIV.** Salvation Army Corps Community Center, 1001 Cumberland Road, Austin TX 78704, 512-442-3212. CT. Geoff Thevenot, <gwthevenot@gmail.com> or Jean McArthur. HA.

**OCTOBER 27, BERLIN, NJ:** Sat: 10:00 AM, 7 RDS. R-R/K-H. EF: \$59. **Registration fee incl. continental BK. and LUN. RSVP to Wayne Ollick, 117 Washington Ave., Berlin, N.J.08009. 6 rounds of round robin plus 1 round KOTH, in groups of 8 or more.** Bud Duble Senior Center, 33 Co-

## May Tourneys

from *STILL MORE TOURNEYS*, p. 20

per Folly Road, Atco, NJ. CT. Herb Lewis, <herblewis1@comcast.net>, Wayne Ollick, <scrabblr1@comcast.net> or Betty McDaniel, 856-728-9446. HA.

**OCTOBER 27, CHICAGO, IL:** Sat: 10:30 AM, 8 RDS. R-R/8+KOTH. EF: \$50. **Collins DIV. will also be offered (with a minimum of 4 entrants).** 1500 N. Dayton St., Chicago, IL 60402. CT. Marty Gabriel, 2941 Whitetail Drive, Charleston IL 61920, 217-348-9230 (H) 217-508-9035 (C), <dai-vamart@mchsi.com>. HA.

**OCTOBER 27, FORT LAUDERDALE, FL:** Sat: 9:00 AM, 8 RDS. R-R. EF: \$35. **4 DIVS. determined by ratings. Entry due by October 16, 2012, after the 16th \$5.00 late fee.** Fort Lauderdale Bridge Club, 700 N E 6th Terrace Fort Lauderdale, Florida 33304, 954-630-8779. CT. Tim Wise, 954-630-8779 or mobile 954-461-3333, <Wise9778@gmail.com>. HA.

**OCTOBER 27, SOUTH LYON, MI:** Sat: 9:00 AM, 8 RDS. EF: \$50. **Add \$5 to entry fee, if paid after 10/20/12. \$60 at the door. Registration from 8:30 - 8:50 a.m. Pairings based on number of entries.** South Lyon United Methodist Church, 640 S. Lafayette Street, South Lyon, MI 48178. CT. Jeff Fiszbein, 10092 Pembroke Circle, South Lyon, MI 48178-8521, 248-310-4257, <fiszbein@sbcglobal.net>. HA.

**OCTOBER 27-28, TCC - CAN-AM CHALLENGE - MILLBURN, NJ:** 2012 Can-Am Challenge. **For details about this event, please visit the event webpage.** TBA, Millburn, NJ. CT. Ed Zurav or Sam Kantimathi, <SamTimer@gmail.com>. HA.

**NOVEMBER 2-4, CAMBRIDGE, MD:** Early Bird: Fri: Noon, 5 RDS. EF: \$30. Main Event: Fri: 8:00 PM, 3 RDS. Sat: 10:00 AM, 8 RDS. Sun: 10:00 AM, 5 RDS. EF: \$110. Commuter fee: \$35. **Register before Labor day, deduct \$10. Registration begins on FRI. at 7:00 p.m.** Hyatt Regency Chesapeake Bay, 100 Heron Blvd. at Route 50, Cambridge, MD. HP: 3 Day, 2 Night Hotel Package (good through 10/3/2012) incl.: 2 bottles of water per day, miniature golf, use of fitness center, volleyball, use of tennis courts, indoor pool, all taxes, resort fees and LUN. on SUN. \$315 single, \$175 pp double. CT. Connie Creed, 233 S. 6th St., #2502, Philadelphia, PA 19106, 215-238-1880(h) or 215-837-3037(c), <partygrl@verizon.net>. HA.

**NOVEMBER 2-4, FALMOUTH, MA:** Cape Code 2012 Tournament. Fri: 3 RDS. Sat: 8 RDS. Sun: 4 RDS. **TWL tournament. 3 unrated pairs event games on SAT. evening.** Seacrest Beach Hotel, 350 Quaker Road, Old Silver Beach Cape Cod, Falmouth, MA 02556. HP: Make RM.reservations and minimum payments to Sherrie Saint John.

CT. Sherrie Saint John, 2 Tanglewood Road, Manchester-by-the-Sea, MA 01944, 978-526-7876, <saint@pobox.com>. HA.

**NOVEMBER 2-4, SAN FRANCISCO, CA:** Fri: 8 RDS. Sat: 8 RDS. Sun: 4 RDS. EF: \$110. **One open DIV. Entries must be postmarked by 10/15/2012. Round-robin groups of 8 + Chew pairings + KOTH.** Parc55 Wyndham Hotel, 55 Cyril Magnin St., San Francisco, CA. HP: \$149/night, group block name: "California Open Scrabble Tournament". CT. Edward De Guzman, 415-335-6926, <edwardd@gmail.com>. HA.

**NOVEMBER 3, BRANTFORD, ON, CAN:** Brantford's 29th Annual Scrabble Tournament. Sat: 10:00 AM, 7 RDS. R-R/K-H. EF: \$40 (CAN). **Entry fee increases to \$45 if registered after October 21. Early bird prize to one of the first 25 entrants. Arrive at 9:30 a.m. to check in and set up.** Friendship House, 452 Grey Street, Brantford, ON, 519-753-8511. CT. Glenn Dunlop, 7 Winter Way, Brantford, ON N3T 6E5, 519-752-2242. HA.

**NOVEMBER 3, EDMONTON, AB, CAN:** Sat: 9:30 AM, 6 RDS. R-R/6+KOTH. EF: \$35 (CAN). **Register as early as possible but no later than the THU. before the tournament.** Stathcona County Community Centre, 401 Festival Lane, Sherwood Park. CT. Huguette Settle, 112 Clareview Road NW, Edmonton, Alberta, Canada T5A 3Y3, 780-476-8019, <hsettle@hotmail.com>. HA.

**NOVEMBER 3, PITTSBURGH, PA:** Sat: 6 RDS. EF: \$25. **Entry fee incl. LUN. DIVS. and pairings based on number of entries.** Mount Lebanon Library, Meeting Room A, Lower Level, 16 Castle Shannon Blvd, Pittsburgh, PA 15228, (412) 531-1912. CT. M.W. Schroeder, <msch@nauti-com.net> or Stan Angrist, (412) 422-7878, <sangrist@verizon.net>. HA.

**NOVEMBER 4, LAGUNA WOODS, CA:** Sun: 9:00 AM, 7 RDS. EF: \$45. **Late Fee \$10, after Fri before event. Modified round robin. Prizes: 1st \$90; 2nd \$50 in every group of 8.** Laguna Woods Village, Clubhouse 5, Rm 1, 26252 Punta Alta, Laguna Woods, California 92637. CT. Gary Moss, (949) 510-1673, <jftsoi.moss@gmail.com>. HA.

**NOVEMBER 10, NORWALK, CT:** Sat: 10:00 AM, 8 RDS. EF: \$60. **\$20 discount for first-time tournament players. \$5 discount for prepaid entries (paid before the date of the tournament). Check in at 9 a.m.** Main Event 2: Sat: 10:00 AM, 3 RDS. EF: \$20. **Unrated novice tournament (new players and players rated under 1,000). Check in at 9 a.m. \$5 discount for youth player and first-time players.** Main Event 3: Sat: 2:00 PM, 4 RDS. EF: \$25. **Rated novice tournament (new players and players rated under 1,000). Check in at 1 p.m. \$5 discount for youth players and first-time players.** Chess Club of Fairfield County, 710 West Avenue,

Norwalk, CT. CT. Cornelia Guest, 203-244-5324, <corneliasguest@gmail.com>. HA.

**NOVEMBER 11, BERKELEY, CA:** Sun: Noon, 6 RDS. EF: \$30. **Entry fee incl. buffet LUN.** The Viceroy Indian Restaurant, 21 Shattuck Square, Berkeley, CA 94704. CT. Mike Frentz, <m.c.frentz@gmail.com>. HA.

**NOVEMBER 11, GUELPH, ON, CAN:** Sun: 2:30 PM, 6 RDS. EF: \$30 (CAN). **DIVS. of 6-11 depending on number of entrants. Limited to 34 entrants.** Squirrel Tooth Alice's, 649 Scottsdale Drive, Unit 5, Guelph, ON. CT. Andy Saunders, 82 Clairfields Drive West, Guelph, ON N1G 5H8, (519) 824-8930 or (416) 668-7500, <andy@andysthoughts.com>. HA.

**NOVEMBER 13, LCT - INDEPENDENCE, OH:** Tue: 6:00 PM, 4 RDS. EF: \$4. **Sponsored by NASPA Club #164 (Independence, OH). Pay at the door.** Angie's Pizza, 6932 Hillside Road, Independence, OH 44131. CT. Christopher Sheppard, <mshep@core.com>. HA.

**NOVEMBER 17, BAYSIDE QUEENS, NY:** Sat: 9:00 AM, 9 RDS. R-R/K-H. **\$66.50 entry fee incl. player participation fee, deli LUN, coffee & tea all day, RM.rental & prizes.** ADRIA Hotel & Conference Center, 221-17 Northern Blvd, Bayside Queens, NY, 1-800-27-ADRIA. CT. Ginger White, 631-399-2579, <kewlcatz@optonline.net>. HA.

**NOVEMBER 17, DALLAS, TX:** Sat: 10:30 AM, 6 RDS. EF: \$35. **Round robin groups (with director discretion predicated upon mix of field). LUN. after 2 games. Walk-ins o.k.** Crowne Plaza Suites - Dallas Park Cntrl., 7800 Alpha Rd, Dallas, TX 75240. CT. Bryan Pepper, 817-538-7750, <screamingmonkeys3@yahoo.com>. HA.

**NOVEMBER 23-25, TARRYTOWN, NY:** Early Bird: Fri: Noon, 5 RDS. EF: \$50. **Registration at 11:30 a.m. Size and format of DIVS. at director's discretion, based on number of entries.** Main Event: Fri: 8:00 PM, 3 RDS. Sat: 10:00 AM, 8 RDS. Sun: 10:00 AM, 5 RDS. R-R/K-H. EF: \$108. **Registration at 7:00 p.m. on FRI. All entries for the main event must be postmarked by Wed, November 14, 2012. Late entries will be accepted only to create even DIVS. or will be otherwise wait listed.** DOUBLE-TREE HOTEL BY HILTON, 455 South Broadway, Tarrytown, NY 10591, (914) 631-5700 or (800) 435-7435. HP: RM.rate code is TST. \$104 per night RM.rate incl. free: parking, pool, sauna, fitness facilities, business center, and internet access in playing RM. RM.availability guaranteed through SAT., November 10, 2012. CT. Linda Wancel, 27-23 170th Street, Flushing NY 11358, (917) 747-5325 or (718) 353-5353, <scrabbleamazon@aol.com>. HA.

**DECEMBER 1, CALGARY, AB, CAN:** Sat: 9:00 AM, 12 RDS. EF: Div. 1: \$60

*LAST OF TOURNEYS continued on p. 21*

## Last of the Tourneys

from *MAY TOURNEYS*, p. 22

(CAN)/\$60 (US), Div. 2: \$50 (CAN)/\$50 (US). **Two DIVS. divided at 1200 rating. Unlimited playups.** Banquet Room, Sierras of Heritage, 8535 Bonaventure Dr. SE, Calgary, AB, Canada. CT. Betty Bergeron, 140 Sunlake Circle SE, Calgary, AB, T2X 3H9, Canada, (403) 201-2206, <bettyb140@shaw.ca>. HA.

**DECEMBER 1-2, FT. LAUDERDALE, FL:** Sat: 9:00 AM, 8 RDS. Sun: 9:00 AM, 8 RDS. EF: Div. 1: \$100, Div. 2-4: \$80. **Entry due by Nov. 16, 2012.** Ft. Lauderdale Bridge Club, 700 N E 6th Terrace, Ft. Lauderdale, FL 33304. CT. Tim Wise, 954-630-8779, <Wise9778@gmail.com>. HA.

## Bingo Skills

by John Chew

Finding bingos is a skill that you can improve with practice, and in this section (based on a popular NSA feature by Joe Edley), we'll help you do so. When you look for bingos, it often helps to look for frequently occurring letter groups at the beginning or end of a word. Each of this issue's racks can be anagrammed to make a word with one of the following initial or final letter groups: CA- LA- OVER- PE- RE- REC- SA- SET- TRI- -AL -AS -ED -ERS -ESS -EST -IES -ING -LY -TER.

- AADILPS      AAADHMMS
- AANRSS      AACIRTVY
- ACDEETX      ABEIRSSS
- AELMRSS      ACEHOPRR
- BEGILNY      AEGIILMR
- CEIHKRT      AGGGILNS
- DEGGORS      BEILOORV
- HILSTXY      CDEEERST
- AADEGIRRS      CEEENRRT
- ADDEGILSS      DEEEGIPR
- ADDEIMNTY      EEGIKMNS
- BEEILMRST      EGIOPRSU

And for players who use the Collins lexicon, here are some racks with anagrams that are only acceptable in Collins, and which have the following letter groups: CO- DE- EN- IN- MA- OVER- PA- PRO- TE- -ATES -ED -ER -ES -EST -IA -IC -IES -IEST -INE -ING -INGS -ISE -IST -ITE -NGS -NT -SE -SS -US.

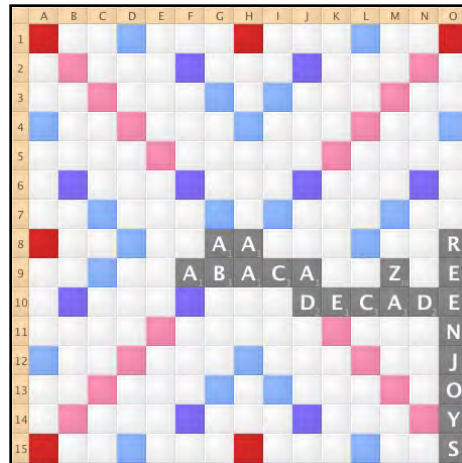
- ACEHRST      AAELPRTT
- ACISTUV      ABCIMRTU
- AEMMOPR      ABCOSTTU
- BEFIORS      ADDEELNR
- BGGNOSU      ADEILNPU
- DDEEINW      AEGIILMO
- EFILSS      ANOPPPRT
- GILNRSU      BEINORTZ
- ADEEIRSST      EHIOSSTT
- AEEGGGIRS      EILLRSTT
- DDEEIOORS      EIOPRRTV
- EEGLRSSU      GIKMNPRU

*BINGO SKILLS ANSWERS on p. 20*

## Challenge Contest 13

by the Bulletin Committee

This issue's challenge is to construct the highest-scoring solitaire game where all tiles used are drawn from the bag in alphabetical order. As usual, every play must be able to withstand a OTCWL2+LL challenge. No blanks are permitted. You do not need to use up all 100 tiles or score unplayed tiles. In the sample solution shown below, five words were played for a total of 358 points; the tiles drawn each turn were AAAAAAB, CC, DDEE, EJNIORSY, Z, all forming an alphabetical sequence.



To enter the contest, enter your game into Quackle, and save and upload a .gcg file through NASPA Member Services, before midnight ET on the evening of August 11. The winning solution will be published in the next issue of the Bulletin, and the winner will receive a year's membership renewal. Ties will be broken in favour of the solution which is received first.

We asked last month for the highest-scoring solitaire game, all of whose words lay below the o1-a15 diagonal. The winning submission, show below, used 99 tiles to score 2,983 points. It earns Terry Hammond (Wenatchee, WA) his second consecutive prize of a year's membership renewal.



## Submissions Wanted

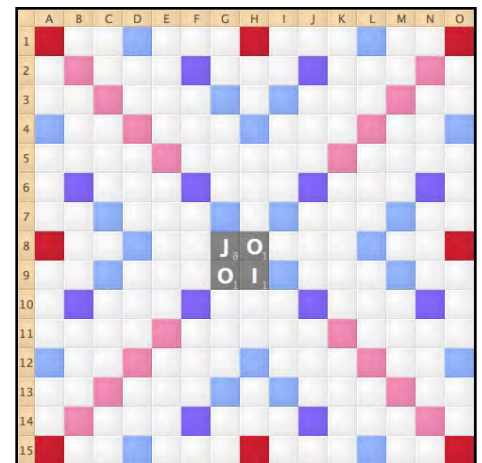
by the Bulletin Committee

Greetings to all! Do you have a great photograph from a recent tournament, an interesting SCRABBLE-related story, an unbelievable phoney, a mind-boggling bingo, a cartoon, a photograph, or a really great scoring combination that you would like to share? Email us at the Bulletin at info@scrabbleplayers.org, and you may find yourself front and center of the next issue! We want to hear from you!

## Game Position

by the Bulletin Committee

The position shown below took place in an annotated game at Board 1 in Round 4 of the 2012 Dallas Open, recorded by Kate Watson and Dee Segrest. Matt Canik (Austin, TX) opened with 8g JO (18); Dave Wiegand (Portland, OR) replied with 9g OI (15). Matt leads 18-15 and holds ?AEIOQS. What should he do? And as with last issue's position, does it matter whether or not Dave is a computer, and not just a human being who sometimes plays like one?



Last issue's answer was that in a regular game, it's better to play 15k TI (8) than c6 TOR-RENTIAL (82), unless you're willing to bet the game against 15a GELATION (140) and a recount that flips the 1-pt win.

Copyright ©2012 NASPA. SCRABBLE® is a trademark of Hasbro, Inc. in the United States and Canada, and of Mattel, Inc. elsewhere. The NASPA Bulletin is available exclusively to NASPA members online during the first week of publication, and can be publicly downloaded from <http://www.scrabbleplayers.org> in later weeks. Comments concerning and submissions to the Bulletin may be emailed to info@scrabbleplayers.org.

The NASPA Bulletin is designed, typeset (in Adobe Garamond 10/10.5 with heads in Gill Sans) and edited by John Chew and Kristen Pederson Chew of Posfit Press; graphic design by Alice Ching-Chew. \*2